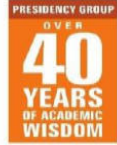




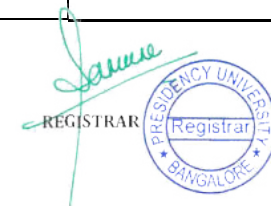
PRESIDENCY UNIVERSITY

Presidency University Act, 2013 of the Karnataka Act No. 41 of 2013 | Established under Section 2(f) of UGC Act, 1956
Approved by AICTE, New Delhi

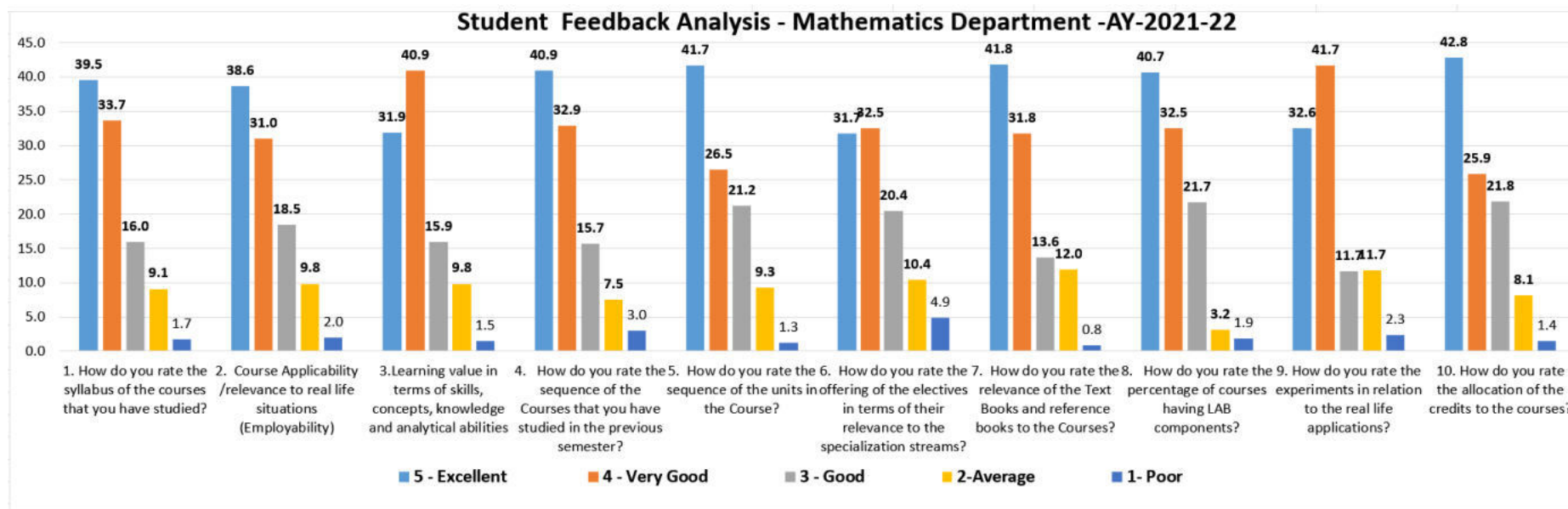


SCHOOL OF ENGINEERING DEPARTMENT OF MATHEMATICS STUDENT FEEDBACK ANALYSIS 2021-22

Criteria	5 – Excellent %	4 - Very Good %	3 – Good %	2- Average %	1- Poor %	Total Respondents
1. How do you rate the syllabus of the courses that you have studied?	39.5	33.7	16.0	9.1	1.7	1321
2. Course Applicability /relevance to real life situations (Employability)	38.6	31.0	18.5	9.8	2.0	
3. Learning value in terms of skills, concepts, knowledge and analytical abilities	31.9	40.9	15.9	9.8	1.5	
4. How do you rate the sequence of the Courses that you have studied in the previous semester?	40.9	32.9	15.7	7.5	3.0	
5. How do you rate the sequence of the units in the Course?	41.7	26.5	21.2	9.3	1.3	
6. How do you rate the offering of the electives in terms of their relevance to the specialization streams?	31.7	32.5	20.4	10.4	4.9	
7. How do you rate the relevance of the Text Books and reference books to the Courses?	41.8	31.8	13.6	12.0	0.8	
8. How do you rate the percentage of courses having LAB components?	40.7	32.5	21.7	3.2	1.9	
9. How do you rate the experiments in relation to the real-life applications?	32.6	41.7	11.7	11.7	2.3	



10. How do you rate the allocation of the credits to the courses?	42.8	25.9	21.8	8.1	1.4
Average	38.21	32.94	17.65	9.10	2.10



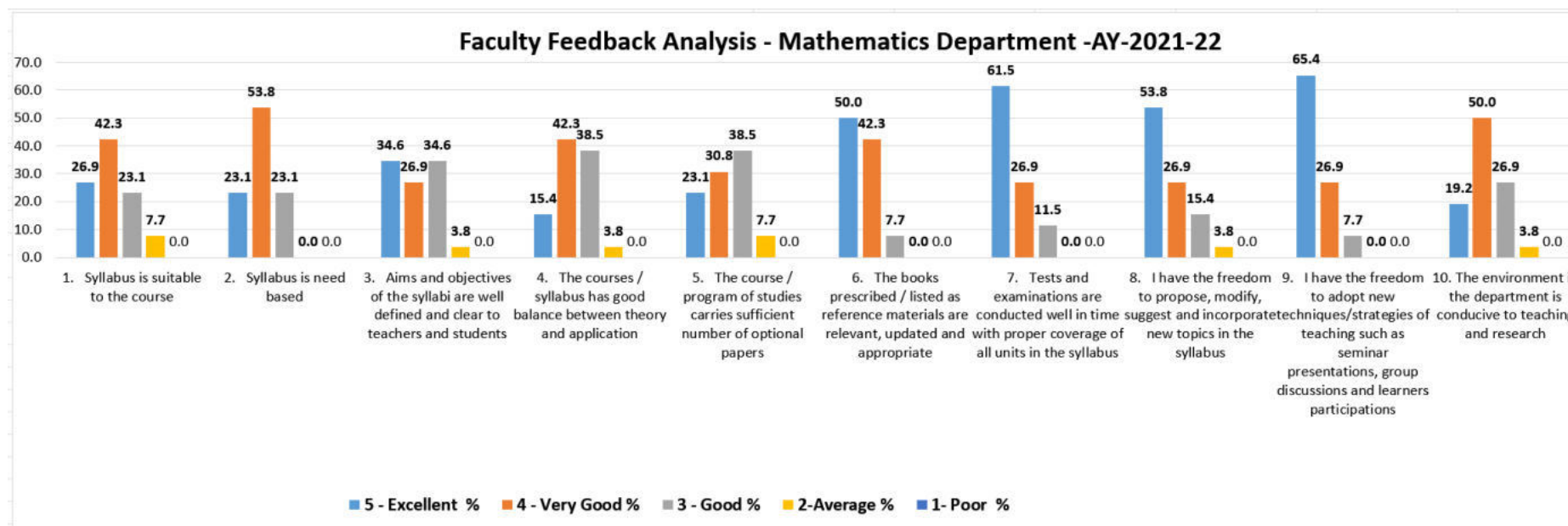


**SCHOOL OF ENGINEERING
DEPARTMENT OF MATHEMATICS
FACULTY FEEDBACK ANALYSIS 2021-22**

Criteria	5 - Excellent %	4 - Very Good %	3 - Good %	2- Average %	1- Poor %	Total Respondents
1. Syllabus is suitable to the course	26.9	42.3	23.1	7.7	0.0	26
2. Syllabus is need based	23.1	53.8	23.1	0.0	0.0	
3. Aims and objectives of the syllabi are well defined and clear to teachers and students	34.6	26.9	34.6	3.8	0.0	
4. The courses / syllabus has good balance between theory and application	15.4	42.3	38.5	3.8	0.0	
5. The course / program of studies carries sufficient number of optional papers	23.1	30.8	38.5	7.7	0.0	
6. The books prescribed / listed as reference materials are relevant, updated and appropriate	50.0	42.3	7.7	0.0	0.0	
7. Tests and examinations are conducted well in time with proper coverage of all units in the syllabus	61.5	26.9	11.5	0.0	0.0	
8. I have the freedom to propose, modify, suggest and incorporate new topics in the syllabus	53.8	26.9	15.4	3.8	0.0	
9. I have the freedom to adopt new techniques/strategies of teaching such as seminar presentations, group discussions and learners participations	65.4	26.9	7.7	0.0	0.0	



10. The environment in the department is conducive to teaching and research	19.2	50.0	26.9	3.8	0.0
Average	37.31	36.92	22.69	3.08	0.00



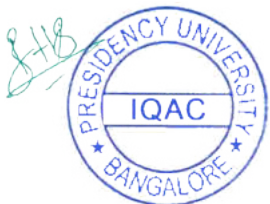
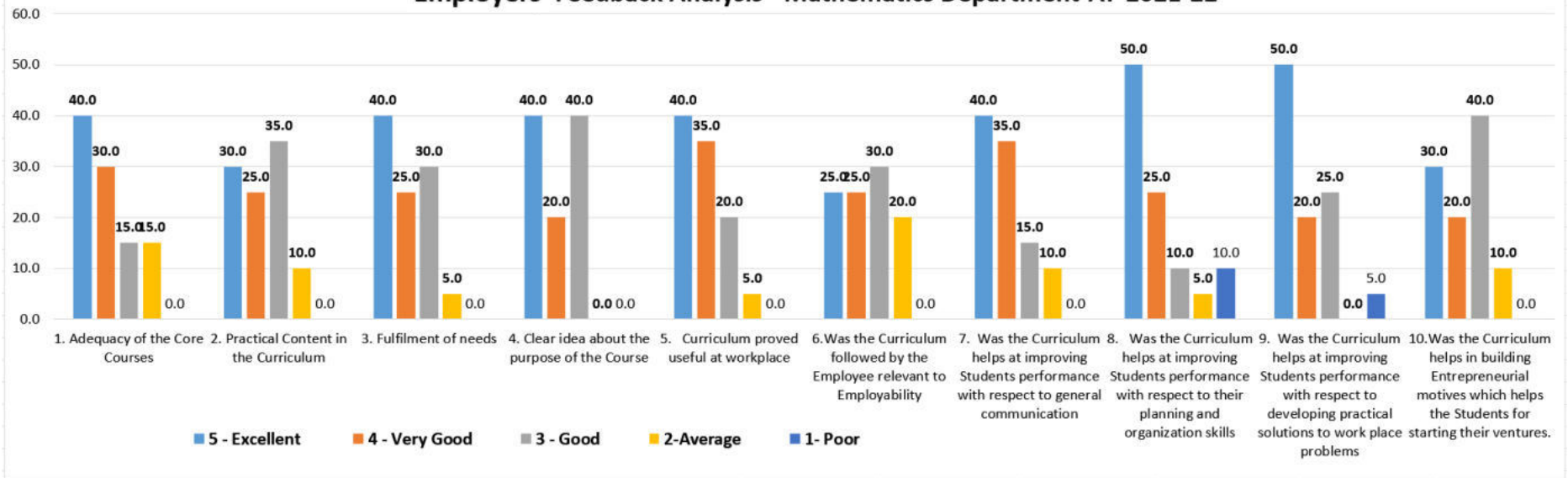


SCHOOL OF ENGINEERING
DEPARTMENT OF MATHEMATICS
EMPLOYERS FEEDBACK ANALYSIS 2021-22

Criteria	5 - Excellent %	4 - Very Good %	3 - Good %	2- Average %	1- Poor %
1. Adequacy of the Core Courses	40.0	30.0	15.0	15.0	0.0
2. Practical Content in the Curriculum	30.0	25.0	35.0	10.0	0.0
3. Fulfilment of needs	40.0	25.0	30.0	5.0	0.0
4. Clear idea about the purpose of the Course	40.0	20.0	40.0	0.0	0.0
5. Curriculum proved useful at workplace	40.0	35.0	20.0	5.0	0.0
6. Was the Curriculum followed by the Employee relevant to Employability	25.0	25.0	30.0	20.0	0.0
7. Was the Curriculum helps at improving Students performance with respect to general communication	40.0	35.0	15.0	10.0	0.0
8. Was the Curriculum helps at improving Students performance with respect to their planning and organization skills	50.0	25.0	10.0	5.0	10.0
9. Was the Curriculum helps at improving Students performance with respect to developing practical solutions to work place problems	50.0	20.0	25.0	0.0	5.0
10. Was the Curriculum helps in building Entrepreneurial motives which helps the students for starting their ventures.	30.0	20.0	40.0	10.0	0.0
Average	38.50	26.00	26.00	8.00	1.50



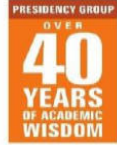
Employers Feedback Analysis - Mathematics Department-AY-2021-22





PRESIDENCY UNIVERSITY

Presidency University Act, 2013 of the Karnataka Act No. 41 of 2013 | Established under Section 2(f) of UGC Act, 1956
Approved by AICTE, New Delhi



SCHOOL OF ENGINEERING DEPARTMENT OF MATHEMATICS ALUMINI FEEDBACK ANALYSIS 2021-22

Criteria	5 - Excellent %	4 - Very Good %	3 - Good %	2- Average %	1- Poor %
1. Was the syllabus relevant to your course?	42.9	35.7	14.3	7.1	0.0
2. Was the syllabus updated enough?	28.6	35.7	14.3	21.4	0.0
3. Was the course content delivery interesting?	42.9	35.7	14.3	7.1	0.0
4. Did the course curriculum intellectually stimulate you?	42.9	21.4	21.4	14.3	0.0
5. Was the course curriculum fulfilling your expectations?	35.7	28.6	21.4	14.3	0.0
6. Have you learnt any skills in the due course of your study?	21.4	28.6	14.3	35.7	0.0
7. Does the syllabus create any interest to pursue post-graduation/research in the particular topic?	21.4	42.9	14.3	21.4	0.0
8. How do you rate the courses that you have learnt suiting the requirements of the industry?	28.6	42.9	21.4	7.1	0.0
9. How do you rate the learning experience in terms of their relevance to the real-life applications?	42.9	21.4	21.4	7.1	7.1
10. How do you rate the courses that you have learnt in relation to your current job?	42.9	7.1	21.4	28.6	0.0
Average	35.00	30.00	17.86	16.43	0.71



