



To: Srivika Srinivas Nunavathu
Date of birth: 01/11/2000
Nationality: United States
Passport: 683582508
e-mail: nsrivika@gmail.com
Application ID: A230001pfr

Pre-acceptance letter for enrolment

Dear Student,

Congratulations! We are pleased to inform you that, after examining the qualifications and documents submitted:

- High school Diploma / Provisional Diploma / School enrolment certificate issued by: Narayana PU College
- Bachelor's Degree Diploma issued by: Presidency University
- Transcript of records (exams taken in the previous degree programme)

- Curriculum vitae
- Proof of English language proficiency:

you have been positively assessed for the **admission with scholarship** to the Master's Degree Course in Data Science, taught in English, with a legal duration of 2 years. Lectures will start in October 2023 for the academic year 2023/2024.

Please, note that this pre-acceptance letter **allows you to start the visa issuance procedure at the relevant Italian Diplomatic-Consular Authority** but does not imply any claim or automatic acceptance for the purpose of issuing the study visa.

Visa procedure

The visa procedure at the relevant Italian Diplomatic-Consular Authority begins by registering on the **University portal** (<https://www.university.it/index.php/>), where it will be necessary to upload the required documents and this pre-acceptance letter. Please, type the application ID displayed above in the 'institution account' field. The academic documents to upload must be the same ones sent to UniME for the evaluation of your application (if not provisional). For more information: <https://international.unime.it/studying/application-and-admission/visa-procedures>.

We recommend asking for guidance and assistance at the Uni-Italia India Office (india@uni-italia.it).

Scholarship

UniME will provide you with a scholarship that includes full exemption from tuition fees and free accommodation in the University Halls of Residence for the whole regular duration of the degree programme. You will also receive assistance to access the UniME Sports Centre and the University canteens at the best favourable prices.

For this purpose, we strongly advise you get the required documents to calculate the '**Equivalent ISEE**' (<https://international.unime.it/study-us/fees-and-fundings>). After receiving confirmation that your application on the University portal has been validated and forwarded to the Italian Diplomatic-Consular Representations, you can arrange an appointment with the assistance of Uni-Italia India Office.

Arrival in Messina

Information on how to reach Messina and the services offered by the University are available at the link <https://international.unime.it/>. We recommend you to download the **Welcome Kit** available at <https://international.unime.it/services/welcome-point>. In the Welcome Kit, you will find all useful info regarding student life, reception and orientation at UniME and in Messina.

For further information, feel free to contact our Student Ambassadors: UniBuddy Chat (<https://international.unime.it/services/student-ambassador-program/chat-our-students>); Instagram @unime.ambassador (<https://www.instagram.com/unime.ambassador/>); For document review and guidance: studentambassadorprogram@unime.it.





Upon arrival in Messina, it will be necessary to book an appointment at the Welcome Point (<https://international.unime.it/services/welcome-point>); follow the instructions in the **Welcome Kit**. **Only after the verification of the following documents it will be possible to enrol** in the for the A.Y. 2023/2024, following the instruction available at: <https://international.unime.it/study-us/application-and-admission/how-enrol>:

- High School and Bachelor's Degree Diploma(s) legalised and translated into Italian or English;
- Declaration of Value in which the overall period of education prior to the enrolment at UniME is clearly indicated. Alternatively to the DoV, it is possible to present the certificate of comparability issued by the Italian ENIC-NARIC Centre (CIMEA);
- Transcript of records (courses taken in the previous degree programme);
- Passport with D visa 'for study'.
- Italian Identification Number 'codice fiscale' (<https://international.unime.it/messina/italian-identification-number>).
- Proof of English language proficiency.

It is necessary that you come to the appointment with a scanned copy of the abovementioned documents.

For questions or requests, please send a message to foreignstudents@unime.it. For technical issues, please send a message to uopnetworking@unime.it.

Dr. Pietro Nuccio
Director

D. A. Servizi Didattici e Alta Formazione

(Document Digitally signed)





To: Ayesha Siddiqua Guffran
Date of birth: 26/05/2001
Nationality: India
Passport: W6613651
e-mail: siddiquaayesha614@gmail.com
Application ID: A230001pfs

Pre-acceptance letter for enrolment

Dear Student,

Congratulations! We are pleased to inform you that, after examining the qualifications and documents submitted:

- High school Diploma / Provisional Diploma / School enrolment certificate issued by: Presidency PU College
- Bachelor's Degree Diploma issued by: Presidency University
- Transcript of records (exams taken in the previous degree programme)

- Curriculum vitae
- Proof of English language proficiency:

you have been positively assessed for the **admission with scholarship** to the Master's Degree Course in Data Science, taught in English, with a legal duration of 2 years.

Lectures will start in October 2023 for the academic year 2023/2024.

Please, note that this pre-acceptance letter **allows you to start the visa issuance procedure at the relevant Italian Diplomatic-Consular Authority** but does not imply any claim or automatic acceptance for the purpose of issuing the study visa.

Visa procedure

The visa procedure at the relevant Italian Diplomatic-Consular Authority begins by registering on the **University portal** (<https://www.university.it/index.php/>), where it will be necessary to upload the required documents and this pre-acceptance letter. Please, type the application ID displayed above in the 'institution account' field. The academic documents to upload must be the same ones sent to UniME for the evaluation of your application (if not provisional). For more information: <https://international.unime.it/studying/application-and-admission/visa-procedures>.

We recommend asking for guidance and assistance at the Uni-Italia India Office (india@uni-italia.it).

Scholarship

UniME will provide you with a scholarship that includes full exemption from tuition fees and free accommodation in the University Halls of Residence for the whole regular duration of the degree programme. You will also receive assistance to access the UniME Sports Centre and the University canteens at the best favourable prices.

For this purpose, we strongly advise you get the required documents to calculate the '**Equivalent ISEE**' (<https://international.unime.it/study-us/fees-and-fundings>). After receiving confirmation that your application on the University portal has been validated and forwarded to the Italian Diplomatic-Consular Representations, you can arrange an appointment with the assistance of Uni-Italia India Office.

Arrival in Messina

Information on how to reach Messina and the services offered by the University are available at the link <https://international.unime.it/>. We recommend you to download the **Welcome Kit** available at <https://international.unime.it/services/welcome-point>. In the Welcome Kit, you will find all useful info regarding student life, reception and orientation at UniME and in Messina.

For further information, feel free to contact our Student Ambassadors: UniBuddy Chat (<https://international.unime.it/services/student-ambassador-program/chat-our-students>); Instagram @unime.ambassador (<https://www.instagram.com/unime.ambassador/>); For document review and guidance: studentambassadorprogram@unime.it.





Upon arrival in Messina, it will be necessary to book an appointment at the Welcome Point (<https://international.unime.it/services/welcome-point>); follow the instructions in the **Welcome Kit**. **Only after the verification of the following documents it will be possible to enrol** in the for the A.Y. 2023/2024, following the instruction available at: <https://international.unime.it/study-us/application-and-admission/how-enrol>:

- High School and Bachelor's Degree Diploma(s) legalised and translated into Italian or English;
- Declaration of Value in which the overall period of education prior to the enrolment at UniME is clearly indicated. Alternatively to the DoV, it is possible to present the certificate of comparability issued by the Italian ENIC-NARIC Centre (CIMEA);
- Transcript of records (courses taken in the previous degree programme);
- Passport with D visa 'for study'.
- Italian Identification Number 'codice fiscale' (<https://international.unime.it/messina/italian-identification-number>).
- Proof of English language proficiency.

It is necessary that you come to the appointment with a scanned copy of the abovementioned documents.

For questions or requests, please send a message to foreignstudents@unime.it. For technical issues, please send a message to uopnetworking@unime.it.

Dr. Pietro Nuccio
Director

D. A. Servizi Didattici e Alta Formazione

(Document Digitally signed)



Lyon, 2 June 2023

Congratulations Rinu!

We are pleased to announce your admission at ESDES Lyon Business School.

The admissions committee has judged your academic background and your motivation to be adequate for our program. Please accept our sincere congratulations.

Admission – ROY Rinu

- Program: Master in Management – International Business Administration
- Program year: 2023-2024
- Program start date: September 2023
- Duration of the program: 2 years
- Cost per year (*Non-EU student*): 12 750 €
- Deposit : 3 000 €

The registrar office will soon contact you to finalize your enrollment.
Meanwhile, if you have any doubts, don't hesitate to get in touch with us.

Sincerely,

Caroline DUVAL
Director of International Promotion and International Admissions

ESDES
Université Catholique de Lyon
10 place des Archives
69288 Lyon cedex 02
Tél. : 04 72 32 50 48
esdes.communication@univ-catholyon.fr
esdes.fr - ucly.fr



Sanne
REGISTRAR
PRESIDENCY UNIVERSITY
BANGALORE

Darshan Gowda Byadarahalli Ravi

NIA: 30850

DNI/PASSAPORT: 911084285487

DATE: 06/07/2023

Study option requested

Master of Science in Industrial Business Management

Dear student,

It is our pleasure to confirm that you have been accepted to the Master of Science in Industrial Business Management study programme for the 2023/24 academic year.

The estimated price of the Master's Degree is 11.060,00 Euro (60 ECTS). This price includes the discount (2.500,00 Euro) for Master's students from Presidency University.

To reserve the pre-enrolment in the programme you must make a payment of 2.100,00 Euro within 15 days of receiving this letter.

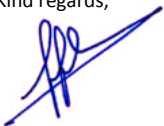
You must make this payment by credit card through the pre-registration platform (<https://www.iqs.edu/en/on-line-preregistration-master>) or by bank transfer through the Flywire platform (www.flywire.com/pay/iqsland) if your bank account is not in Spain. Once you have reserved your pre-enrolment, we will send you the instructions on how and when to finalise the enrolment procedure.

The amount to reserve your pre-enrolment in the programme does not represent an additional cost as it is the first payment of your enrolment and it will be only returned if you do not meet the necessary academic requirements to access the studies at IQS, without prejudice to your right to withdraw as established in the legal terms and conditions.

Note: Your enrolment becomes definitive once you have submitted the required documents for accessing master's degree studies according to the rules set up in the RD 822/2021 (you can find more detailed information in the manual "Information on master's degree enrolment", which we will send to you after you have made the payment to reserve your pre-enrolment).

Please feel free to contact us for any clarification you may need.

Kind regards,



José Javier Molins Vara
Secretario General
Via Augusta, 390
08017 Barcelona, Spain
Tel.: + 34 932 672 001
secretaria.matricula@iqs.url.edu



REGISTRAR

REGISTRAR
PRESIDENCY UNIVERSITY
BANGALORE

Gagan Gowda Byregowda G

NIA: 30849

DNI/PASSAPORT: 402600388825

DATE: 06/07/2023

Study option requested

Master of Science in Industrial Business Management

Dear student,

It is our pleasure to confirm that you have been accepted to the Master of Science in Industrial Business Management study programme for the 2023/24 academic year.

The estimated price of the Master's Degree is 11.060,00 Euro (60 ECTS). This price includes the discount (2.500,00 Euro) for Master's students from Presidency University.

To reserve the pre-enrolment in the programme you must make a payment of 2.100,00 Euro within 15 days of receiving this letter.

You must make this payment by credit card through the pre-registration platform (<https://www.iqs.edu/en/on-line-preregistration-master>) or by bank transfer through the Flywire platform (www.flywire.com/pay/iqsland) if your bank account is not in Spain. Once you have reserved your pre-enrolment, we will send you the instructions on how and when to finalise the enrolment procedure.

The amount to reserve your pre-enrolment in the programme does not represent an additional cost as it is the first payment of your enrolment and it will be only returned if you do not meet the necessary academic requirements to access the studies at IQS, without prejudice to your right to withdraw as established in the legal terms and conditions.

Note: Your enrolment becomes definitive once you have submitted the required documents for accessing master's degree studies according to the rules set up in the RD 822/2021 (you can find more detailed information in the manual "Information on master's degree enrolment", which we will send to you after you have made the payment to reserve your pre-enrolment).

Please feel free to contact us for any clarification you may need.

Kind regards,



José Javier Molins Vara
Secretario General
Via Augusta, 390
08017 Barcelona, Spain
Tel.: + 34 932 672 001
secretaria.matricula@iqs.url.edu



REGISTRAR

REGISTRAR
PRESIDENCY UNIVERSITY
BANGALORE

Deeksha Kooganahalli Ananda

NIA: 30851

DNI/PASSAPORT: 836953115833

DATE: 06/07/2023

Study option requested

Master of Science in Industrial Business Management

Dear student,

It is our pleasure to confirm that you have been accepted to the Master of Science in Industrial Business Management study programme for the 2023/24 academic year.

The estimated price of the Master's Degree is 11.060,00 Euro (60 ECTS). This price includes the discount (2.500,00 Euro) for Master's students from Presidency University.

To reserve the pre-enrolment in the programme you must make a payment of 2.100,00 Euro within 15 days of receiving this letter.

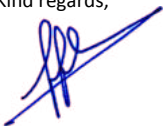
You must make this payment by credit card through the pre-registration platform (<https://www.iqs.edu/en/on-line-preregistration-master>) or by bank transfer through the Flywire platform (www.flywire.com/pay/iqsland) if your bank account is not in Spain. Once you have reserved your pre-enrolment, we will send you the instructions on how and when to finalise the enrolment procedure.

The amount to reserve your pre-enrolment in the programme does not represent an additional cost as it is the first payment of your enrolment and it will be only returned if you do not meet the necessary academic requirements to access the studies at IQS, without prejudice to your right to withdraw as established in the legal terms and conditions.

Note: Your enrolment becomes definitive once you have submitted the required documents for accessing master's degree studies according to the rules set up in the RD 822/2021 (you can find more detailed information in the manual "Information on master's degree enrolment", which we will send to you after you have made the payment to reserve your pre-enrolment).

Please feel free to contact us for any clarification you may need.

Kind regards,



José Javier Molins Vara
Secretario General
Via Augusta, 390
08017 Barcelona, Spain
Tel.: + 34 932 672 001
secretaria.matricula@iqs.url.edu



REGISTRAR

REGISTRAR
PRESIDENCY UNIVERSITY
BANGALORE

Admission letter

I. Blessie Blessie

NIA: 30820

ID/PASSAPORT: Y5621701

DATE: 10/07/2023

Study option requested:

Master of Science in International Marketing in a Digital Environment

Dear I. Blessie Blessie,

It is our pleasure to confirm that you have been accepted to the Master of Science in International Marketing in a Digital Environment study programme for the 2023/24 academic year.

The estimated price of the Master is 12.260,00 Euro. This price includes the discount for study a master's degree at Presidency University.

To reserve your pre-enrolment in the programme you must make a payment of 2,100 Euro within 15 days of receiving this letter. You must make this payment by credit card through the pre-registration platform (<https://www.iqs.edu/en/online-preregistration-master>) or by bank transfer through the Flywire platform (www.flywire.com/pay/iqsland) if your bank account is not in Spain. Once you have reserved your pre-enrolment, we will send you the instructions on how and when to finalise the enrolment procedure.

The amount to reserve your pre-enrolment in the programme does not represent an additional cost as it is the first payment of your enrolment and it will be only returned if you do not meet the necessary academic requirements to access the studies at IQS, without prejudice to your right to withdraw as established in the legal terms and conditions.

*NOTE: Your admission is conditioned by the achievement of the access's requirements and the **enrolment becomes definitive** once you have submitted **the required documents for accessing master's degree studies according to the rules set up in the RD 822/2021** (you can find more detailed information in the manual "Information on master's degree enrolment", which we will send to you after you have made the payment of the pre-enrollment fee).*

Please feel free to contact us for any clarification you may need.

Kind regards,



José Javier Molins Vara

General Secretary

Via Augusta, 390

08017 Barcelona, Spain

Tel.: + 34 932 672 001

secretaria.matricula@iqs.url.edu



REGISTRAR

REGISTRAR

PRESIDENCY UNIVERSITY
BANGALORE

Date of Issue: June 8, 2023

Master's Program
Application No: 10276

Dear Lokasara Mahadevaswamy Chaithra:

We are delighted to offer you a place at Chang Gung University. Your record of achievement has distinguished you in a pool of highly accomplished applicants and you have been selected for admission in the 2023-2024 academic year to the Department of Artificial Intelligence at Chang Gung University. Congratulations!

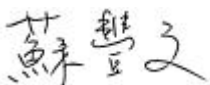
At Chang Gung University, we are committed to helping you reach your highest potential. We believe you will be an excellent addition to a community of scholars who share a passion for learning, a deep curiosity about the world and a commitment to act and make positive difference. You will have a chance to learn from professors who are dedicated to their fields and to benefit from the resources of a student-centered university. You will meet friends who share your academic interests and aspirations.

Some important logistics:

- Please visit the Department's website for all the information regarding the program.
- The letter of acceptance is attached on the second page of this admission package. Please read the Terms and Conditions of this offer outlined in this letter.

Once again, congratulations. We hope that you will take this opportunity to write the next chapter of your life at Chang Gung University and make your distinctive contribution to our proud legacy of excellence.

Sincerely,



Prof. Von-Wun Soo
Acting Director, Department of Artificial Intelligence
Chang Gung University

Chang Gung University Letter of Acceptance for Study Permit/ Visa Application

Date of Issue: June 8, 2023

Application Number: 10276

The above-named student has been admitted to Chang Gung University for Fall Semester 2023 as a full-time graduate student to the Department of Artificial Intelligence. The medium of the program is English. Accept your admission offer by clicking and fill in [the online CGU Admission Form](#) (including the program selected if you have been admitted to two or more programs) **by June 16, 2023**. Please submit via email the electronic copies of (1) authenticated diploma/graduation certificate and (2) complete transcripts to OIA **by July 31, 2023**.

Classes begin on September 4, 2023. Orientation activities will take place the week before. Subject to the University Comptroller, it is expected that fees for the 2023-2024 Academic Year will be announced here: <https://oia.cgu.edu.tw/var/file/15/1015/img/2755/tuition.html>.

Please note that the following documents must be submitted in original copies at the time of registration.

1. Highest Graduation Certificate with Original Authentication in Chinese or English by R.O.C (Taiwan) Overseas Embassies & Missions in the country of the original school.
2. Full Transcript(s) of the above degree with Original Authentication in Chinese or English by R.O.C (Taiwan) Overseas Embassies & Missions in the country of the original school.
3. Original Highest Graduation Certificate and transcript of the above authenticated.
4. The latest certificate of date of entry to and exit from Taiwan (foreign citizens are exempted from this requirement).

Students who fail to comply with the requirements will not be able to register and complete the enrollment at CGU.

CGU Contact:

Office of International Affairs

Tzu-Ching Li (Ms.)

Office of International Affairs

Tel: +886-3-211-8800 Ext. 3049

E-mail: cgu_fs@mail.cgu.edu.tw



日期：2023 年 6 月 8 日

申請編號：10276

Lokasara Mahadevaswamy Chaithra 您好：

竭誠歡迎您就讀長庚大學，您優秀的學歷與經歷使您在眾多優秀的申請者中脫穎而出，並經長庚大學人工智慧學系錄取 2023 學年碩士班新生，恭喜您！

在長庚大學，我們將全力幫助您發揮最大的潛能。我們相信，您將成為一個擁有學習熱情並對世界有著強烈好奇心更進而付諸行動的優秀人才，您將有機會向各領域優秀的教授學習；使用以學生為中心的教學資源及會遇到與您有共同學術興趣和志向的同儕。

以下重要資訊請詳閱：

- 請參閱您錄取系所的各项資訊。
- 請您依照本通知書中第二頁之入學通知書完成各項文件驗證。

再次祝賀您；我們希望您能藉此機會在長庚大學譜寫您人生新的篇章，為我們引以為傲的卓越傳統做出您與眾不同的貢獻。

祝 順心

長庚大學人工智慧學系
蘇豐文所長


REGISTRAR
 REGISTRAR
PRESIDENCY UNIVERSITY
BANGALORE

長庚大學入學通知書

日期：2023 年 6 月 8 日

申請編號：10276

台端已錄取長庚大學2023學年秋季班人工智慧學系碩士班，該課程是以英文授課。請在2023年6月16日之前填寫長庚大學[線上就讀意願回覆表](#)，如果您同時錄取兩個學系，也務必於此表單上填寫您最終的選擇。

請在 2023 年 7 月 31 日前將以下文件以電子郵件寄至長庚大學國際事務處。

1. 經我國駐原畢業學校所在國之駐外使領館、代表處或其他經外交部授權機構驗證之中文或英文最高畢業證書。
2. 經我國駐原畢業學校所在國之駐外使領館、代表處或其他經外交部授權機構驗證之歷年成績單。

秋季班課程將於 2023 年 9 月 4 日開始，註冊程序將在課程開始前一週舉辦。長庚大學 2023-2024 年的學雜費收退費基準將公告於

<https://oia.cgu.edu.tw/var/file/15/1015/img/2755/tuition.html>。

請於到校註冊時，繳交以下文件正本：

1. 經我國駐原畢業學校所在國之駐外使領館、代表處或其他經外交部授權機構驗證之中文或英文最高畢業證書正本。
2. 經我國駐原畢業學校所在國之駐外使領館、代表處或其他經外交部授權機構驗證之歷年成績單正本。
3. 國外學歷證件及歷年成績證明正本。
4. 國外學歷修業起迄期間之入出國主管機關核發之入出國紀錄一份（外籍人士無需繳交）。

未繳交的學生將無法完成本校註冊。

長庚大學國際事務處聯絡人：

姓名：黎子菁

電話：+886-3-211-8800 Ext. 3049

E-mail：cgu_fs@mail.cgu.edu.tw



Dheeraj Manjunath

Date of Birth: 2001-09-05

Citizenship: India

Admission Letter

Dear Dheeraj Manjunath

We are very pleased to inform you that you have been admitted into the following full-time study programme of Riga Technical University:

Study Programme: Smart Electronic Systems

Study level: Graduate

Overall duration in years: 2.0

Tuition fee: €4,000 per year

Security deposit: 500 EUR

Place of residence in the Republic of Latvia: Azenes Street 8, Riga, Latvia

In order to complete the admission process and become our full-time student the following requirements should be observed:

- Receive an electronic admission package to the email you have provided (Admission Letter, Agreement for studies at Riga Technical University, Invoice for first year's tuition fee and security deposit).
- Make a tuition fee and a security deposit payment for the first study year to the Riga Technical University account as stated in the invoice.
- Receive supporting documents for your visa or residence permit application, which will be issued by RTU after the above-mentioned payment, has been settled.
- By making the above-mentioned payment student confirms that he/she agrees to RTU Tuition fee and Security Deposit payment terms.

If you have any questions or you require any assistance do not hesitate to contact us: * Phone: +371 67089766 * E-mail: admission@rtu.lv * WhatsApp: +371 25714286



Igors Tipans
Deputy Rector
International Cooperation and Studies
Riga Technical University





OFFICE OF THE DEAN
GRADUATE DIVISION

RIVERSIDE, CALIFORNIA 92521-0208
FAX: (951) 827-2238

January 13, 2022

Sabarish Krishna Kumar
#118 SABARI Officers Model Colony SM Road
T Dasarahalli
Bangalore, 560057
INDIA

Dear Sabarish Krishna Kumar:

We are pleased to offer you admission to the MS program in Business Analytics at the University of California, Riverside (UCR) for Fall 2022.

We wish to extend your much-deserved congratulations and encourage you to ask any questions you wish about the department, the program, and our university. The academic community in the Business Analytics department is a thriving one that we hope you will choose to help diversify it further with your recognized talents. In addition to the program resources, Graduate Division strives to offer programming to support your intellectual growth and provide the tools necessary to meet your professional and educational goals. We hope you will choose to pursue your graduate studies here at UCR!

In recognition of your academic accomplishments, you have been awarded a financial award from **The A. Gary Anderson Graduate School of Management**. The accompanying award letter and Fellowship Regulations provide full details of the award and any requirements you may have to satisfy.

For us to reserve your space at UCR and generate registration materials, please visit https://gradsis.ucr.edu/gradsis/GSIS_LOGIN.Login_student and indicate your decision no later than **April 15, 2022**. Please note that all admitted students who intend to enroll in the MS program must submit a non-refundable professional fee deposit of US \$1,000.00 at the time of formal acceptance.

The accompanying Verification of Support Requirements form will provide you with details regarding the required proof of sponsorship needed to prepare an I-20 form for you to obtain your student visa.

If you have any questions about your fellowship package, any forms you receive from UCR, or general graduate student concerns, please contact the Business Analytics or the Graduate Admissions Office. We are here to answer any questions you may have as we understand that this is an important decision that impacts your future.

Congratulations again on your success in being admitted. We look forward to hearing from you soon and welcoming you to UCR.

Sincerely,

Shaun Bowler
Dean, Graduate Division



THE A. GARY ANDERSON GRADUATE SCHOOL OF MANAGEMENT
RIVERSIDE, CALIFORNIA 92521-0427

FAX: (951) 827-2055
PHONE: (951) 827-6200

January 13, 2022

Sabarish Krishna Kumar
#118 SABARI Officers Model Colony SM Road
T Dasarahalli
Bangalore, 560057
INDIA
SID: 862328513

Dear Sabarish Krishna Kumar:

Congratulations on your admission to the University of California, Riverside. I am pleased to inform you about the details of your financial award for the duration of your time in the Business Analytics program from The A. Gary Anderson Graduate School of Management. Based on the strength of your academic background and your potential for success in our Business Analytics program.

This award consists of the following:

Business Analytics Financial Award \$15,000.00
(applied over program duration):
Total \$15,000.00

We hope that this award will facilitate your pursuit of an MS in Business Analytics degree at UC Riverside. This financial award is contingent upon maintaining an active student status each quarter. You must remain in good academic standing with a minimum 3.0 GPA to receive your award each quarter.

Please accept this scholarship award as soon as possible but no later than April 15, 2022. To submit your decision, please click on the link below to log in to view and accept your admission and financial award.

https://gradsis.ucr.edu/gradsis/gsis_login.login_student

If you have any further questions about the funding above, please contact us at agsmadmissions@ucr.edu. Once again, congratulations to you.

Sincerely,

A handwritten signature in black ink, appearing to read "Yunzeng Wang".

Yunzeng Wang, Dean



YW:clr

cc: Graduate Division

Jane
REGISTRAR



REGISTRAR
PRESIDENCY UNIVERSITY
BANGALORE

Sabarish Krishna Kumar
UCR Student ID = 862328513
MS Business Analytics

Fees for an academic year plus living and other expenses are currently estimated at US\$76,031.81 per year but are subject to change at any time. This total is for the student alone. Based on your current offer of admission, the below breakdown outlines what is required, any fellowship funding received, and what the student will need to provide in year 1.

Year 1 - Verification of Support		
Total Required Support (Student Only)	Fellowship Support Offered to Student	Verification of Support Student Required to Provide
US\$76,031.81	US\$15,000.00	US\$61,031.81

Verification of an additional \$3,500 for one dependent, plus \$3,000 for each additional dependent is required if you will be bringing your spouse and/or child/children. For those bringing a dependent(s), please add your total dependent expenses to the Total Required Support amount listed above to know how much you will need to provide.

Verification of support can be provided through: self-support; family and/or individual sponsorship; an external sponsor (government, organization/agency, employer); fellowship funding by the university and/or graduate program/department. Additional information regarding acceptable sponsor types and proof of support from those sponsors is outlined in our [Verification of Support Guidelines](#). International Students and Scholars will notify you on how to provide annual verification of support beyond your first year.

Once you accept your offer of admission, you will receive a link to the appropriate form to enter your verification of support for your first year and information necessary to prepare the appropriate Certificate of Eligibility form for yourself and any dependent(s). Once your Certificate of Eligibility form is prepared, you will be notified on how it will be sent.

If you have any questions regarding the verification of support process or completing the certificate of eligibility form, please contact the International Students and Scholars office for assistance. They can be reached at 951-827-4113 or internationalstudents@ucr.edu.

Recipients of campus fellowships must adhere to the following regulations:

- Must enroll in and complete a full course load (12 units)
- Must maintain a 3.00 overall grade point average (GPA)
- Must have less than 8 units of Incomplete grades
- Must be within acceptable time limits.
 - PhD students must be advanced to candidacy within 12 quarters after entry unless noted otherwise in the award letter (please refer to your award letter)
 - You must graduate by the end of your program's normative time to degree plus one year. This is published at the end of your major's description in the UCR Catalog
- Any change in student status (leave of absence, withdrawal, etc) must be reported immediately to the Graduate Division (x2-3315)
- Changes in degree objective and/or degree program may affect your eligibility for continuation of your award

Employment: University employment is contingent on maintaining all eligibility requirements for employment in the U.S. and maintain satisfactory job performance.

Employment Supplement: Fellowships are awarded to students to free them from the need for employment. Awards with a stipend of greater than or equal to a \$10,000 stipend can only be supplemented with prior approval of the Graduate Dean. It is not unusual for the Dean to approve employment of up to 10 hours a week (25 percent time) during the tenure of an award. Employment may be approved up to 50 percent time for limited periods, but only if employment averages 25 percent or less over the course of the academic year.

Fellowship holders with a stipend of \$10,000 or more must have *prior approval* of the Graduate Dean before *any* employment may be added.

All exceptions must be approved by the Graduate Dean *before* employment begins. In no case can time employed exceed 50%.

Fellowships that do **not** allow supplementation are the GAANN (unless specifically provided in the award) and Dissertation Year Fellowship. The Graduate Research Mentorship Program may be supplemented with a 25% time GSR appointment only.

If the fellowship package shows that fees are paid by virtue of employment (TA or GSR) and you decline or are ineligible for employment there is no guarantee that fees will be paid from another source.

Minimum GPA: If your cumulative GPA falls below a 3.00, stipend, fees and tuition will be rescinded and the award package in its entirety is no longer valid. Any guarantee of employment as a TA or GSR will be lost. Additionally, students who do not maintain a 3.00 cumulative GPA are subject to dismissal.

English Language Proficiency for Teaching Assistants: Any student who was born in a country where English is not the primary language must pass an English language competency exam **before** performing duties as a TA. This includes not only international students but also citizens and permanent residents. This exam is normally the SPEAK, TSE, TAST/TOEFL iBT or IELST exam.

Taxes-Domestic Students: Fellowship stipends are fully taxable but UCR does not withhold federal or state taxes from non-payroll stipend payments. It might be beneficial to pay estimated taxes quarterly. For more information see IRS publication 505. You should keep receipts for books and course-related expenses for tax preparation purposes as well as a copy of your award letter.

Taxes-International Students: Fellowship stipends are fully taxable. International students must fill out the W8BEN forms in order to determine their tax withholding. This must be done in GLACIER. For more information on this go to <http://accounting.ucr.edu/payroll/glacierinfosheet.html>. You should keep receipts for books and course-related expenses for tax preparation purposes as well as a copy of your award letter.

Publication: Some funding sources require the University to track the success of their fellowship recipients. Your acceptance of the award gives permission to publish (newsletters, reports, and brochures) and disseminate information regarding your accomplishments.

Exceptions: Exceptions to fellowship regulations can only be approved by the Graduate Dean.


11/13/2022 02:47:47 PM
REGISTRAR Registrar
BANGALORE



Resolution Regarding Graduate Scholars, Fellows, Trainees, and Assistants

Acceptance of an offer of financial support* (such as a graduate scholarship, fellowship, traineeship, or assistantship) for the next academic year by a prospective or enrolled graduate student completes an agreement that both student and graduate school expect to honor. In that context, the conditions affecting such offers and their acceptance must be defined carefully and understood by all parties.

Students are under no obligation to respond to offers of financial support prior to April 15; earlier deadlines for acceptance of such offers violate the intent of this Resolution. In those instances in which a student accepts an offer before April 15, and subsequently desires to withdraw that acceptance, the student may submit in writing a resignation of the appointment at any time through April 15. However, an acceptance given or left in force after April 15 commits the student to first inform the program that they are withdrawing or resigning from the offer of financial support that they previously had accepted. Starting in Fall 2020, applicants are no longer required to obtain a formal release from the program whose offer they accepted, either before or after the April 15 deadline. It is further agreed by the institutions and organizations subscribing to the above Resolution that a copy of this Resolution or a link to the URL should accompany every scholarship, fellowship, traineeship, and assistantship offer.

The following list includes CGS member institutions that indicated their support of the Resolution.

This Resolution was renewed October 2019.

Alcorn State University	College of New Jersey	Hofstra University	Montana State University - Bozeman
American University	College of Saint Rose	Hood College	Montana Technological University
Andrews University	College of William and Mary	Howard University	Montclair State University
Appalachian State University	Colorado School of Mines	Idaho State University	Mount Mary College
Arizona State University	Columbia College Chicago	Illinois Institute of Technology	National University
Arkansas State University	Columbia University	Illinois State University	New Jersey Institute of Technology
Arkansas Tech University	Concordia University Chicago	Indiana State University	New Mexico State University
Augusta University	Coppin State College	Indiana University	New York Medical College
Austin Peay State University	Cornell University	Indiana University of Pennsylvania	New York University
Ball State University	Creighton University	Iowa State University	North Carolina Agricultural & Technical State University
Baylor College of Medicine	Dakota State University	Jackson State University	North Carolina State University at Raleigh
Baylor University	Dartmouth College	James Madison University	North Dakota State University
Boise State University	Drew University	John Carroll University	Northern Arizona University
Boston College	Drexel University	Johns Hopkins University	Northern Illinois University
Boston University	Duke University	Kansas State University	Northern Michigan University
Bowling Green State University	East Carolina University	Kent State University	Northwestern State University of Louisiana
Bradley University	Eastern Illinois University	Kutztown University of Pennsylvania	Northwestern University
Brandeis University	Eastern Kentucky University	Lamar University	Oakland University
Brigham Young University	Eastern Michigan University	Langston University	Ohio State University
Brown University	Eastern Washington University	Lehigh University	Ohio State University
Bryn Mawr College	Emory University	Lipscomb University	Oklahoma State University
Caldwell University	Emporia State University	Loma Linda University	Old Dominion University
California Institute of Technology	Fairmont State University	Louisiana State University and A & M College	Oregon State University
California State University, Fresno	Fayetteville State University	Louisiana State University Health Sciences Center	Park University
California State University, Fullerton	Ferris State University	Loyola Marymount University	Pennsylvania State University
California State University, Los Angeles	Fielding Graduate University	Loyola University Maryland	Portland State University
California State University, Stanislaus	Florida A & M University	Loyola University of Chicago	Princeton University
Case Western Reserve University	Florida Atlantic University	Marquette University	Purdue University
Catholic University of America	Florida International University	Massachusetts Institute of Technology	Radford University
Central Michigan University	Florida State University	Medical College of Wisconsin	Rensselaer Polytechnic Institute
Central Washington University	Fordham University	Medical University of South Carolina	Rice University
Chapman University	Fort Hays State University	Metropolitan State University of Denver	Rochester Institute of Technology
City University of New York Graduate Center	Gallaudet University	Miami University	Rockefeller University
Claremont Graduate University	George Mason University	Michigan State University	Rowan University
Clark Atlanta University	George Washington University	Michigan Technological University	Rutgers - New Brunswick
Clark University	Georgetown University	Middle Tennessee State University	Rutgers - Newark
Clemson University	Georgia Institute of Technology	Minnesota State University - Mankato	St. Bonaventure University
Cleveland State University	Georgia Southern University	Mississippi State University	St. Cloud State University
College of Charleston	Georgia State University	Missouri State University	Saint Louis University
	Grand Valley State University		
	Hampton University		
	Harvard University		

* This Resolution applies to offers of financial support only, not offers of admission.



CGS - Resolution Regarding Graduate Scholars, Fellows, Trainees and Assistants (continued)

St. John's University	University of California, Santa Cruz	University of North Dakota	Virginia Polytechnic Institute and State University
San Diego State University	University of Central Arkansas	University of North Florida	Wake Forest University
San Jose State University	University of Central Florida	University of North Texas	Walden University
Shippensburg University	University of Central Missouri	University of North Texas Health Science Center at Fort Worth	Washington State University
South Dakota School of Mines and Technology	University of Chicago	University of Northern Colorado	Washington University in St. Louis
South Dakota State University	University of Cincinnati	University of Northern Iowa	Wayne State College
Southeast Missouri State University	University of Colorado at Boulder	University of Notre Dame	Wayne State University
Southern Illinois University at Carbondale	University of Connecticut	University of Oklahoma	Wesleyan University
Southern Illinois University at Edwardsville	University of Dayton	University of Oklahoma Health Sciences Center	West Chester University
Southern Methodist University	University of Delaware	University of Oregon	West Virginia University
Southern University A&M College	University of Denver	University of Pennsylvania	Western Carolina University
Spalding University	University of the District of Columbia	University of Pittsburgh	Western Illinois University
Stanford University	University of Florida	University of Rhode Island	Western Kentucky University
State University of New York at Binghamton	University of Georgia	University of Rochester	Western Michigan University
State University of New York – Upstate Medical University	University of Hartford	University of Scranton	Wichita State University
Stony Brook University	University of Hawaii at Manoa	University of South Alabama	William Paterson University
SUNY College of Environmental Science and Forestry	University of Houston	University of South Carolina	Woods Hole Oceanographic Institution
Syracuse University	University of Idaho	University of South Florida	Worcester Polytechnic Institute
Temple University	University of Illinois at Chicago	University of Southern California	Wright State University
Tennessee State University	University of Illinois at Springfield	University of Southern Mississippi	Yale University
Tennessee Technological University	University of Illinois at Urbana-Champaign	University of Tennessee at Chattanooga	Youngstown State University
Texas A & M International University	University of Iowa	University of Tennessee Health Science Center	
Texas A & M University	University of Kansas	University of Tennessee, Knoxville	
Texas A & M University - Corpus Christi	University of Kentucky	University of Texas at Arlington	
Texas Christian University	University of Louisiana at Lafayette	University of Texas at Austin	
Texas Southern University	University of Louisville	University of Texas at Brownsville	
Texas State University	University of Maine	University of Texas at Dallas	
Texas Tech University	University of Maryland, Baltimore County	University of Texas at El Paso	
Texas Woman's University	University of Maryland, College Park	University of Texas at San Antonio	
Towson University	University of Maryland, Eastern Shore	University of Texas at Tyler	
Truman State University	University of Massachusetts Amherst	University of Texas Graduate School of Biomedical Science at Galveston	
Tufts University	University of Massachusetts Boston	University of Texas MD Anderson Cancer Center UTHealth Graduate School of Biomedical Sciences, The	
Tulane University	University of Massachusetts Medical School	University of Texas Grad School of Biomedical Science at San Antonio	
University at Buffalo, SUNY	The University of Memphis	University of the Pacific	
University of Akron	University of Miami	University of Toledo	
University of Alabama	University of Michigan	University of Tulsa	
University of Alabama at Birmingham	University of Minnesota	University of Utah	
University of Alabama in Huntsville	University of Mississippi	University of Vermont	
University of Albany, State University of New York	University of Missouri, Columbia	University of Virginia	
University of Arizona	University of Missouri, Kansas City	University of Washington	
University of Arkansas	University of Missouri, St. Louis	University of West Florida	
University of Bridgeport	University of Montana	University of Wisconsin – Eau Claire	
University of California, Berkeley	University of Nebraska at Kearney	University of Wisconsin – La Crosse	
University of California, Davis	University of Nebraska-Lincoln	University of Wisconsin – Madison	
University of California, Irvine	University of Nebraska at Omaha	University of Wisconsin – Milwaukee	
University of California, Los Angeles	University of Nevada-Las Vegas	University of Wyoming	
University of California, Merced	University of Nevada-Reno	Utah State University	
University of California, Riverside	University of New Hampshire	Valdosta State University	
University of California, San Diego	University of New Haven	Vanderbilt University	
University of California, San Francisco	University of New Mexico	Villanova University	
University of California, Santa Barbara	University of North Carolina at Chapel Hill	Virginia Commonwealth University	
	University of North Carolina at Charlotte		
	University of North Carolina at Greensboro		



Council of Graduate Schools
One Dupont Circle, NW, 230
Washington, DC 20036
(202) 223-3791
(202) 296-9194 (fax)



OFFER OF ADMISSION Yeates School of Graduate Studies

July 12, 2022

Student ID Number: 501155009

Please use in all correspondence

Dear Syed Sufyan,

Congratulations! The admissions committee for the graduate program in Master of Engineering at Toronto Metropolitan University ([formerly Ryerson University](#)) is pleased to offer you admission to the **Full Time Master of Engineering - Civil Engineering** program.

Entry Term: Winter 2023
Term Begins: January 13, 2023
Confirmation Date: July 22, 2022

Toronto Metropolitan University's cutting-edge, career-oriented graduate programs put you at the centre of an innovative, integrated learning environment. Explore emerging fields or apply new thinking to established ones with support from 1,000+ expert faculty in the heart of Canada's most cosmopolitan city. Join the next generation of creative leaders, intellectual explorers and dynamic changemakers to realize your future and transform our world.

The Yeates School of Graduate Studies [website](#) provides a wealth of information to guide you through your graduate career at Toronto Metropolitan University. You are responsible for reading through the information listed on the site, including deadline dates for enrollment, graduate policies, tuition fees, international student support, curriculum, scholarship opportunities and graduation requirements.

It is important that you review any current requirements for accessing campus. For information regarding the university's evolving vaccine requirements, please visit the [Toronto Metropolitan University Covid-19 Information and Updates](#) page.

Please go online to [RAMSS](#) to ACCEPT or DECLINE your offer by **July 22, 2022**.

Confirmation Deposit due October 10, 2022. If your offer is issued after October 03, 2022 your confirmation deposit is due by the Confirmation Date listed above. A **non-refundable deposit** of \$1,000.00 is required to reserve your space in this program. You can make your payment through your financial institution or credit union starting on **October 03, 2022**. For more information, visit the [Student Fees](#) website.

International students be sure to contact the International Student Service Office before and after you arrive in Canada. Their [website](#) provides important advice and contact information to guide you through your graduate education in Canada and at Toronto Metropolitan University.

If you have any further questions about any program related matters, please contact the Program Administrator, Ms. Rachel Peluso by email at civgrad@ryerson.ca

We sincerely hope that you will be joining us at Toronto Metropolitan University!

Best Regards,



Lillian Zereneh





Manager, Graduate Admissions and Recruitment
Yeates School of Graduate Studies

Jane
REGISTRAR
PRESIDENCY UNIVERSITY
BANGALORE
Registrar
G15

Letter of Acceptance for International Students

July 12, 2022

Student ID Number: 501155009
Please use in all correspondence

Mr Syed Sufyan
No 83 4th A Cross Kanakanagar
Bangalore,
India
560032

Country of Citizenship: India **Date of Birth:** November 03, 1998

Toronto Metropolitan University Designated Learning Institution Number: O19395677651

Term Begins: January 13, 2023
Enrollment Begin Date: December 02, 2022
Last Date to Enroll: January 27, 2023

Program of Study admitted to: Master of Engineering - Civil Engineering

Academic year/semester of study which student will enter: Winter 2023

Anticipated approximate length of program: 2 year(s)

Tuition fees: Approximately \$26,710 + \$18,300 in additional costs (for example, accommodations) per academic year (this is the current fee range, and is subject to change). One academic year is comprised of three semesters. Program specific fees are published [online](#).

Exchange Student: No

Internship/Work Practicum: None

International Students are required to submit their valid study permit to the International Student Support Office in their mandatory welcome appointment upon arrival. Students are also required to complete the [welcome form](#) and register for their welcome appointment. If you already have a study permit, please upload a scanned copy to the welcome form. It is your responsibility to ensure that you are in possession of a valid study permit at the start of your academic program. For more information on applying for a study permit, you may visit the Immigration, Refugees and Citizenship Canada (IRCC) [website](#). Students must consult the website for the term beginning Winter 2023 for updated Fees.



Signature of Institution Representative
Name of Institution Representative:

Lillian Zereneh
Manager, Graduate Admissions and Recruitment
Yeates School of Graduate Studies





OFFICE OF THE DEAN
GRADUATE DIVISION

RIVERSIDE, CALIFORNIA 92521-0208
FAX: (951) 827-2238

January 10, 2022

Vaishnavi Shantharamu
No 6/1,nagasandra post hessarghatta main road bonemill
sidedahalli main road bangalore 73
bangalore, Karnataka 560073
INDIA

Dear Vaishnavi Shantharamu:

We are pleased to offer you admission to the MS program in Business Analytics at the University of California, Riverside (UCR) for Fall 2022.

We wish to extend your much-deserved congratulations and encourage you to ask any questions you wish about the department, the program, and our university. The academic community in the Business Analytics department is a thriving one that we hope you will choose to help diversify it further with your recognized talents. In addition to the program resources, Graduate Division strives to offer programming to support your intellectual growth and provide the tools necessary to meet your professional and educational goals. We hope you will choose to pursue your graduate studies here at UCR!

In recognition of your academic accomplishments, you have been awarded a financial award from **The A. Gary Anderson Graduate School of Management**. The accompanying award letter and Fellowship Regulations provide full details of the award and any requirements you may have to satisfy.

For us to reserve your space at UCR and generate registration materials, please visit https://gradsis.ucr.edu/gradsis/GSIS_LOGIN.Login_student and indicate your decision no later than **April 15, 2022**. Please note that all admitted students who intend to enroll in the MS program must submit a non-refundable professional fee deposit of US \$1,000.00 at the time of formal acceptance.

The accompanying Verification of Support Requirements form will provide you with details regarding the required proof of sponsorship needed to prepare an I-20 form for you to obtain your student visa.

If you have any questions about your fellowship package, any forms you receive from UCR, or general graduate student concerns, please contact the Business Analytics or the Graduate Admissions Office. We are here to answer any questions you may have as we understand that this is an important decision that impacts your future.

Congratulations again on your success in being admitted. We look forward to hearing from you soon and welcoming you to UCR.

Sincerely,

Shaun Bowler
Dean, Graduate Division





THE A. GARY ANDERSON GRADUATE SCHOOL OF MANAGEMENT
RIVERSIDE, CALIFORNIA 92521-0427

FAX: (951) 827-2055
PHONE: (951) 827-6200

January 10, 2022

Vaishnavi Shantharamu

No 6/1, nagasandra post hessarghatta main road bonemill

sidedahalli main road bangalore 73

bangalore, Karnataka 560073

INDIA

SID: 862333113

Dear Vaishnavi Shantharamu:

Congratulations on your admission to the University of California, Riverside. I am pleased to inform you about the details of your financial award for the duration of your time in the Business Analytics program from The A. Gary Anderson Graduate School of Management. Based on the strength of your academic background and your potential for success in our Business Analytics program.

This award consists of the following:

Business Analytics Financial Award \$15,000.00

(applied over program duration):

Total \$15,000.00

We hope that this award will facilitate your pursuit of an MS in Business Analytics degree at UC Riverside. This financial award is contingent upon maintaining an active student status each quarter. You must remain in good academic standing with a minimum 3.0 GPA to receive your award each quarter.

Please accept this scholarship award as soon as possible but no later than April 15, 2022. To submit your decision, please click on the link below to log in to view and accept your admission and financial award.

https://gradsis.ucr.edu/gradsis/gsis_login.login_student

If you have any further questions about the funding above, please contact us at agsmadmissions@ucr.edu. Once again, congratulations to you.

Sincerely,

A handwritten signature in black ink, appearing to read "Yunzeng Wang".

Yunzeng Wang, Dean



YW:clr

cc: Graduate Division

Jane
REGISTRAR



The seal is circular with a blue border. Inside the border, the text "PRESIDENCY UNIVERSITY" is written at the top and "BANGALORE" at the bottom, separated by two small stars. In the center of the seal, the word "Registrar" is written in a serif font.

Vaishnavi Shantharamu
UCR Student ID = 862333113
MS Business Analytics

Fees for an academic year plus living and other expenses are currently estimated at US\$76,031.81 per year but are subject to change at any time. This total is for the student alone. Based on your current offer of admission, the below breakdown outlines what is required, any fellowship funding received, and what the student will need to provide in year 1.

Year 1 - Verification of Support		
Total Required Support (Student Only)	Fellowship Support Offered to Student	Verification of Support Student Required to Provide
US\$76,031.81	US\$15,000.00	US\$61,031.81

Verification of an additional \$3,500 for one dependent, plus \$3,000 for each additional dependent is required if you will be bringing your spouse and/or child/children. For those bringing a dependent(s), please add your total dependent expenses to the Total Required Support amount listed above to know how much you will need to provide.

Verification of support can be provided through: self-support; family and/or individual sponsorship; an external sponsor (government, organization/agency, employer); fellowship funding by the university and/or graduate program/department. Additional information regarding acceptable sponsor types and proof of support from those sponsors is outlined in our [Verification of Support Guidelines](#). International Students and Scholars will notify you on how to provide annual verification of support beyond your first year.

Once you accept your offer of admission, you will receive a link to the appropriate form to enter your verification of support for your first year and information necessary to prepare the appropriate Certificate of Eligibility form for yourself and any dependent(s). Once your Certificate of Eligibility form is prepared, you will be notified on how it will be sent.

If you have any questions regarding the verification of support process or completing the certificate of eligibility form, please contact the International Students and Scholars office for assistance. They can be reached at 951-827-4113 or internationalstudents@ucr.edu.

Recipients of campus fellowships must adhere to the following regulations:

- Must enroll in and complete a full course load (12 units)
- Must maintain a 3.00 overall grade point average (GPA)
- Must have less than 8 units of Incomplete grades
- Must be within acceptable time limits.
 - PhD students must be advanced to candidacy within 12 quarters after entry unless noted otherwise in the award letter (please refer to your award letter)
 - You must graduate by the end of your program's normative time to degree plus one year. This is published at the end of your major's description in the UCR Catalog
- Any change in student status (leave of absence, withdrawal, etc) must be reported immediately to the Graduate Division (x2-3315)
- Changes in degree objective and/or degree program may affect your eligibility for continuation of your award

Employment: University employment is contingent on maintaining all eligibility requirements for employment in the U.S. and maintain satisfactory job performance.

Employment Supplement: Fellowships are awarded to students to free them from the need for employment. Awards with a stipend of greater than or equal to a \$10,000 stipend can only be supplemented with prior approval of the Graduate Dean. It is not unusual for the Dean to approve employment of up to 10 hours a week (25 percent time) during the tenure of an award. Employment may be approved up to 50 percent time for limited periods, but only if employment averages 25 percent or less over the course of the academic year.

Fellowship holders with a stipend of \$10,000 or more must have *prior approval* of the Graduate Dean before *any* employment may be added.

All exceptions must be approved by the Graduate Dean *before* employment begins. In no case can time employed exceed 50%.

Fellowships that do **not** allow supplementation are the GAANN (unless specifically provided in the award) and Dissertation Year Fellowship. The Graduate Research Mentorship Program may be supplemented with a 25% time GSR appointment only.

If the fellowship package shows that fees are paid by virtue of employment (TA or GSR) and you decline or are ineligible for employment there is no guarantee that fees will be paid from another source.

Minimum GPA: If your cumulative GPA falls below a 3.00, stipend, fees and tuition will be rescinded and the award package in its entirety is no longer valid. Any guarantee of employment as a TA or GSR will be lost. Additionally, students who do not maintain a 3.00 cumulative GPA are subject to dismissal.

English Language Proficiency for Teaching Assistants: Any student who was born in a country where English is not the primary language must pass an English language competency exam **before** performing duties as a TA. This includes not only international students but also citizens and permanent residents. This exam is normally the SPEAK, TSE, TAST/TOEFL iBT or IELST exam.

Taxes-Domestic Students: Fellowship stipends are fully taxable but UCR does not withhold federal or state taxes from non-payroll stipend payments. It might be beneficial to pay estimated taxes quarterly. For more information see IRS publication 505. You should keep receipts for books and course-related expenses for tax preparation purposes as well as a copy of your award letter.

Taxes-International Students: Fellowship stipends are fully taxable. International students must fill out the W8BEN forms in order to determine their tax withholding. This must be done in GLACIER. For more information on this go to <http://accounting.ucr.edu/payroll/glacierinfosheet.html>. You should keep receipts for books and course-related expenses for tax preparation purposes as well as a copy of your award letter.

Publication: Some funding sources require the University to track the success of their fellowship recipients. Your acceptance of the award gives permission to publish (newsletters, reports, and brochures) and disseminate information regarding your accomplishments.

Exceptions: Exceptions to fellowship regulations can only be approved by the Graduate Dean.

11/10/2022 03:58:32 PM
REGISTRAR Registrar
BANGALORE





Resolution Regarding Graduate Scholars, Fellows, Trainees, and Assistants

Acceptance of an offer of financial support* (such as a graduate scholarship, fellowship, traineeship, or assistantship) for the next academic year by a prospective or enrolled graduate student completes an agreement that both student and graduate school expect to honor. In that context, the conditions affecting such offers and their acceptance must be defined carefully and understood by all parties.

Students are under no obligation to respond to offers of financial support prior to April 15; earlier deadlines for acceptance of such offers violate the intent of this Resolution. In those instances in which a student accepts an offer before April 15, and subsequently desires to withdraw that acceptance, the student may submit in writing a resignation of the appointment at any time through April 15. However, an acceptance given or left in force after April 15 commits the student to first inform the program that they are withdrawing or resigning from the offer of financial support that they previously had accepted. Starting in Fall 2020, applicants are no longer required to obtain a formal release from the program whose offer they accepted, either before or after the April 15 deadline. It is further agreed by the institutions and organizations subscribing to the above Resolution that a copy of this Resolution or a link to the URL should accompany every scholarship, fellowship, traineeship, and assistantship offer.

The following list includes CGS member institutions that indicated their support of the Resolution.

This Resolution was renewed October 2019.

Alcorn State University	College of New Jersey	Hofstra University	Montana State University - Bozeman
American University	College of Saint Rose	Hood College	Montana Technological University
Andrews University	College of William and Mary	Howard University	Montclair State University
Appalachian State University	Colorado School of Mines	Idaho State University	Mount Mary College
Arizona State University	Columbia College Chicago	Illinois Institute of Technology	National University
Arkansas State University	Columbia University	Illinois State University	New Jersey Institute of Technology
Arkansas Tech University	Concordia University Chicago	Indiana State University	New Mexico State University
Augusta University	Coppin State College	Indiana University	New York Medical College
Austin Peay State University	Cornell University	Indiana University of Pennsylvania	New York University
Ball State University	Creighton University	Iowa State University	North Carolina Agricultural & Technical State University
Baylor College of Medicine	Dakota State University	Jackson State University	North Carolina State University at Raleigh
Baylor University	Dartmouth College	James Madison University	North Dakota State University
Boise State University	Drew University	John Carroll University	Northern Arizona University
Boston College	Drexel University	Johns Hopkins University	Northern Illinois University
Boston University	Duke University	Kansas State University	Northern Michigan University
Bowling Green State University	East Carolina University	Kent State University	Northwestern State University of Louisiana
Bradley University	Eastern Illinois University	Kutztown University of Pennsylvania	Northwestern University
Brandeis University	Eastern Kentucky University	Lamar University	Oakland University
Brigham Young University	Eastern Michigan University	Langston University	Ohio State University
Brown University	Eastern Washington University	Lehigh University	Ohio State University
Bryn Mawr College	Emory University	Lipscomb University	Oklahoma State University
Caldwell University	Emporia State University	Loma Linda University	Old Dominion University
California Institute of Technology	Fairmont State University	Louisiana State University and A & M College	Oregon State University
California State University, Fresno	Fayetteville State University	Louisiana State University Health Sciences Center	Park University
California State University, Fullerton	Ferris State University	Loyola Marymount University	Pennsylvania State University
California State University, Los Angeles	Fielding Graduate University	Loyola University Maryland	Portland State University
California State University, Stanislaus	Florida A & M University	Loyola University of Chicago	Princeton University
Case Western Reserve University	Florida Atlantic University	Marquette University	Purdue University
Catholic University of America	Florida International University	Massachusetts Institute of Technology	Radford University
Central Michigan University	Florida State University	Medical College of Wisconsin	Rensselaer Polytechnic Institute
Central Washington University	Fordham University	Medical University of South Carolina	Rice University
Chapman University	Fort Hays State University	Metropolitan State University of Denver	Rochester Institute of Technology
City University of New York Graduate Center	Gallaudet University	Miami University	Rockefeller University
Claremont Graduate University	George Mason University	Michigan State University	Rowan University
Clark Atlanta University	George Washington University	Michigan Technological University	Rutgers - New Brunswick
Clark University	Georgetown University	Middle Tennessee State University	Rutgers - Newark
Clemson University	Georgia Institute of Technology	Minnesota State University - Mankato	St. Bonaventure University
Cleveland State University	Georgia Southern University	Mississippi State University	St. Cloud State University
College of Charleston	Georgia State University	Missouri State University	Saint Louis University
	Grand Valley State University		
	Hampton University		
	Harvard University		

* This Resolution applies to offers of financial support only, not offers of admission.



CGS - Resolution Regarding Graduate Scholars, Fellows, Trainees and Assistants (continued)

St. John's University	University of California, Santa Cruz	University of North Dakota	Virginia Polytechnic Institute and State University
San Diego State University	University of Central Arkansas	University of North Florida	Wake Forest University
San Jose State University	University of Central Florida	University of North Texas	Walden University
Shippensburg University	University of Central Missouri	University of North Texas Health Science Center at Fort Worth	Washington State University
South Dakota School of Mines and Technology	University of Chicago	University of Northern Colorado	Washington University in St. Louis
South Dakota State University	University of Cincinnati	University of Northern Iowa	Wayne State College
Southeast Missouri State University	University of Colorado at Boulder	University of Notre Dame	Wayne State University
Southern Illinois University at Carbondale	University of Connecticut	University of Oklahoma	Wesleyan University
Southern Illinois University at Edwardsville	University of Dayton	University of Oklahoma Health Sciences Center	West Chester University
Southern Methodist University	University of Delaware	University of Oregon	West Virginia University
Southern University A&M College	University of Denver	University of Pennsylvania	Western Carolina University
Spalding University	University of the District of Columbia	University of Pittsburgh	Western Illinois University
Stanford University	University of Florida	University of Rhode Island	Western Kentucky University
State University of New York at Binghamton	University of Georgia	University of Rochester	Western Michigan University
State University of New York – Upstate Medical University	University of Hartford	University of Scranton	Wichita State University
Stony Brook University	University of Hawaii at Manoa	University of South Alabama	William Paterson University
SUNY College of Environmental Science and Forestry	University of Houston	University of South Carolina	Woods Hole Oceanographic Institution
Syracuse University	University of Idaho	University of South Florida	Worcester Polytechnic Institute
Temple University	University of Illinois at Chicago	University of Southern California	Wright State University
Tennessee State University	University of Illinois at Springfield	University of Southern Mississippi	Yale University
Tennessee Technological University	University of Illinois at Urbana-Champaign	University of Tennessee at Chattanooga	Youngstown State University
Texas A & M International University	University of Iowa	University of Tennessee Health Science Center	
Texas A & M University	University of Kansas	University of Tennessee, Knoxville	
Texas A & M University - Corpus Christi	University of Kentucky	University of Texas at Arlington	
Texas Christian University	University of Louisiana at Lafayette	University of Texas at Austin	
Texas Southern University	University of Louisville	University of Texas at Brownsville	
Texas State University	University of Maine	University of Texas at Dallas	
Texas Tech University	University of Maryland, Baltimore County	University of Texas at El Paso	
Texas Woman's University	University of Maryland, College Park	University of Texas at San Antonio	
Towson University	University of Maryland, Eastern Shore	University of Texas at Tyler	
Truman State University	University of Massachusetts Amherst	University of Texas Graduate School of Biomedical Science at Galveston	
Tufts University	University of Massachusetts Boston	University of Texas MD Anderson Cancer Center UTHealth Graduate School of Biomedical Sciences, The	
Tulane University	University of Massachusetts Medical School	University of Texas Grad School of Biomedical Science at San Antonio	
University at Buffalo, SUNY	The University of Memphis	University of the Pacific	
University of Akron	University of Miami	University of Toledo	
University of Alabama	University of Michigan	University of Tulsa	
University of Alabama at Birmingham	University of Minnesota	University of Utah	
University of Alabama in Huntsville	University of Mississippi	University of Vermont	
University of Albany, State University of New York	University of Missouri, Columbia	University of Virginia	
University of Arizona	University of Missouri, Kansas City	University of Washington	
University of Arkansas	University of Missouri, St. Louis	University of West Florida	
University of Bridgeport	University of Montana	University of Wisconsin – Eau Claire	
University of California, Berkeley	University of Nebraska at Kearney	University of Wisconsin – La Crosse	
University of California, Davis	University of Nebraska-Lincoln	University of Wisconsin – Madison	
University of California, Irvine	University of Nebraska at Omaha	University of Wisconsin – Milwaukee	
University of California, Los Angeles	University of Nevada-Las Vegas	University of Wyoming	
University of California, Merced	University of Nevada-Reno	Utah State University	
University of California, Riverside	University of New Hampshire	Valdosta State University	
University of California, San Diego	University of New Haven	Vanderbilt University	
University of California, San Francisco	University of New Mexico	Villanova University	
University of California, Santa Barbara	University of North Carolina at Chapel Hill	Virginia Commonwealth University	
	University of North Carolina at Charlotte		
	University of North Carolina at Greensboro		



Council of Graduate Schools
One Dupont Circle, NW, 230
Washington, DC 20036
(202) 223-3791
(202) 296-9194 (fax)



Technische Universität München - 80333 München - Germany

TUM Center for Study and Teaching
Bewerbung und Immatrikulation

Arcisstraße 21
80333 München
Germany

Herrn
Aizer Ali Sharief
c/o AIZER ALI SHARIEF
17th Cross 3rd Block Hbr Layout, 1131 Door No
560043 Bangalore
INDIEN

Bankverbindung
Technische Universität München
Bayerische Landesbank
IBAN: DE45700500003901190315
BIC: BYLADEMMXXX

München, 18. Juli 2022

Zulassungsbescheid Sustainable Resource Management Masterstudium [Master of Science] Wintersemester 2022/23, Einstiegssemester 1

Sehr geehrter Herr Aizer Ali Sharief,

wir freuen uns, dass wir Sie für den oben genannten Studienplatz zulassen können. Als nächsten Schritt möchten wir Sie bitten, Ihren Studienplatz in Ihrem TUMonline Bewerberkonto anzunehmen. Die Studienplatzannahme ist Voraussetzung für die Einschreibung (Immatrikulation) an der Technischen Universität München.

Sofern Ihre Unterlagen (siehe Dokumentencheckliste) noch nicht vollständig sind, bitten wir Sie, diese baldmöglichst an das Immatrikulationsamt zu schicken.

Ferner bitten wir Sie die Zahlung von Beiträgen und/oder Gebühren zu tätigen. Wichtige Informationen zu den Überweisungsformalitäten, dem Verwendungszweck und der Höhe der Beiträge/Gebühren finden Sie nach der Annahme des Studienplatzes auf Ihrer Statusseite im Bewerberkonto unter dem Menüpunkt Einschreibung. Wir weisen darauf hin, dass diese Zahlung sich ausschließlich auf die Aufnahme des beantragten Studiums im Wintersemester 2022/23 bezieht.

Sobald Sie Ihren Studienplatz angenommen haben und Ihre Unterlagen sowie Ihre Zahlung vollständig und fristgerecht bei uns eingegangen sind, werden wir Sie endgültig immatrikulieren und Ihnen schnellstmöglich Ihre Studienpapiere zur Verfügung stellen. Bitte beachten Sie, dass Sie für die Anmeldung zu Lehrveranstaltungen immatrikuliert sein müssen.

Das Wintersemester 2022/23 beginnt am 1. Oktober 2022 und endet am 31. März 2023. Die Vorlesungen finden vom 17. Oktober 2022 bis zum 10. Februar 2023 statt.

Für Ihr Studium an der Technischen Universität München wünschen wir Ihnen viel Erfolg!

Mit freundlichen Grüßen
Bewerbung und Immatrikulation

Seite 1/3

Dieser Bescheid wurde maschinell erstellt und ist auch ohne Siegel und Unterschrift gültig.

Antragsnummer / Application number: 1-00724567

Bewerbernummer / Applicant number: 2-02205395





Eine digitale Kopie des Dokumentes ist 6 Monate ab Ausstellungsdatum mit PIN F327 abrufbar unter:
<https://campus.tum.de/verify/6398-ED47-F66B-93CF>

Anlage(n)
Rechtsbehelfsbelehrung

TUM Center for Study and Teaching
Bewerbung und Immatrikulation

Arcisstraße 21
80333 München
Germany

Bankverbindung
Technische Universität München
Bayerische Landesbank
IBAN: DE45700500003901190315
BIC: BYLADEMMXXX

Dieser Bescheid wurde maschinell erstellt und ist auch ohne Siegel und Unterschrift gültig.

Antragsnummer / Application number: 1-00724567

Bewerbernummer / Applicant number: 2-02205395



Rechtsbehelfsbelehrung

Gegen diesen Bescheid der Technischen Universität München kann **innerhalb eines Monats nach Bekanntgabe dieses Bescheids Klage** erhoben werden bei dem

Bayerischen Verwaltungsgericht München in 80335 München
Postfachanschrift: Postfach 20 05 43, 80005 München
Hausanschrift: Bayerstraße 30, 80335 München

TUM Center for Study and Teaching
Bewerbung und Immatrikulation

Arcisstraße 21
80333 München
Germany

schriftlich, zur Niederschrift oder elektronisch in einer für den Schriftformersatz **zugelassenen**¹ Form.

Bankverbindung
Technische Universität München
Bayerische Landesbank
IBAN: DE45700500003901190315
BIC: BYLADEMXXX

Hinweise zur Rechtsbehelfsbelehrung:

- 1 Die Einlegung eines Rechtsbehelfs per einfacher E-Mail ist nicht zugelassen und entfaltet keine rechtlichen Wirkungen! Nähere Informationen zur elektronischen Einlegung von Rechtsbehelfen entnehmen Sie bitte der Internetpräsenz der Bayerischen Verwaltungsgerichtsbarkeit (www.vgh.bayern.de). Kraft Bundesrechts wird in Prozessverfahren vor den Verwaltungsgerichten infolge der Klageerhebung eine Verfahrensgebühr fällig.

Seite 3/3

Dieser Bescheid wurde maschinell erstellt und ist auch ohne Siegel und Unterschrift gültig.

Antragsnummer / Application number: 1-00724567

Bewerbernummer / Applicant number: 2-02205395



**Rechtsverbindlich ist der Zulassungsbescheid in der deutschen Fassung!
The German version of the letter of admission is legally binding!**

Munich, 18. July 2022

**Letter of admission Sustainable Resource Management Master's program
[Master of Science] Winter semester 2022/23, Entrance semester 1**

Dear Mr. Aizer Ali Sharief,

we are pleased to inform you that you have been admitted to the program specified above. If you wish to accept this offer of admission, you must do so officially in to your applicant account in TUMonline. Your official acceptance of this offer of admission is a prerequisite for enrollment at the Technical University of Munich.

If you have not submitted all documents (see document checklist in your TUMonline account), please send any missing documents as soon as possible to the Student Admission.

You must also submit payment for required fees and/or charges. You will find detailed information on the bank transfer procedure, how to indicate payment purpose and the amount payable on the status page of your applicant account under the enrollment tab, after you have accepted the offer of admission in TUMonline. Please note: The payment of student fees/charges applies to the specific program to which you have been admitted for the Winter semester 2022/23.

As soon as you have accepted the offer of admission in TUMonline and we have received all required documents and payments we will be able to finalize your enrollment and make your enrollment documents available to you in TUMonline. Please consider, that you must be enrolled to register for courses.

The Winter semester 2022/23 starts on 1. October 2022 and ends on 31. March 2023. Lectures are held from 17. October 2022 until 10. February 2023.

We wish you the very best for success in your studies at the Technical University of Munich!

Sincerely,
Student Admission



A digital copy of the document is available 6 months from the date of issue with PIN F327 at:
<https://campus.tum.de/verify/6398-ED47-F66B-93CF>

Appendix
Information on legal remedies

TUM Center for Study and Teaching
Student Admission

Arcisstraße 21
80333 München
Germany

Bank details
Technische Universität München
Bayerische Landesbank
IBAN: DE45700500003901190315
BIC: BYLADEM3333





**Rechtsverbindlich ist die Rechtsbehelfsbelehrung in der deutschen Fassung!
The German version of the note on legal remedies will be mandatory!**

Legal Remedies

Within one month after announcement of the decision of the Technical University of Munich you may take direct legal action against this decision to

Bayerisches Verwaltungsgericht München in 80335 München
Postfachanschrift: Postfach 20 05 43, 80005 München
Hausanschrift: Bayerstraße 30, 80335 München

either in writing or a **legally accepted**¹ form of electronic equivalent, or declared in person for the record of the clerk's office of this court.

TUM Center for Study and Teaching
Student Admission

Arcisstraße 21
80333 München
Germany

Bank details
Technische Universität München
Bayerische Landesbank
IBAN: DE45700500003901190315
BIC: BYLADEMMXXX

Note on Legal Remedies:

- 1 An opposition or action may not be filed with a simple email. This has no legal force. For detailed information on electronic filing of an action, visit the website of the Bayerische Verwaltungsgerichtsbarkeit at (www.vgh.bayern.de).
By virtue of German federal law, an advancement of court fees is required for proceedings before administrative courts.

Page 2/2

This notification has been created automatically and is valid without seal or signature.

Antragsnummer / Application number: 1-00724567

Bewerbernummer / Applicant number: 2-02205395



Student Name: Vaibhavi Satish
Student Id: 11601561
Semester: 2022 Fall
Tuition: Foreign Non Resident
Major (Program/Plan): BUAN-MS

April 13, 2022

Dear Ms. Satish,

Congratulations! You have been admitted to the Business Analytics program. The University of North Texas provides an exciting place to pursue your graduate education, and we are committed to your success. At UNT you will find the education and support you need to realize your goals and expand your horizons.

You are now eligible to register during your upcoming enrollment period. Please visit your student portal at my.unt.edu for important information about enrollment dates, registration and class schedules.

F-1, F-2, and J-1 International students must confirm enrollment requirements based on their visa type, and must complete their immigration document check in with the ISSS office after arrival in the U.S. For questions about enrollment requirements based on your student immigration status, please visit www.international.unt.edu/immigration.

I look forward to having you as a graduate student at UNT, as you join the excitement of discovering real solutions, creating new opportunities and making a difference in the world. At UNT, we expect you to pursue academic excellence in a rigorous, yet caring environment. This [Graduate Student Success Manual](#) is designed to provide a wealth of information to facilitate your smooth and successful transition to UNT. Please contact us if you have any questions about making the most of your graduate education.

Sincerely,

Michael Sanders

Michael Sanders, M.Ed

Associate Vice President of Enrollment



OFFER LETTER



20 July 2022

Mr Santhosh Mayuram Venugopal | Student ID 3238733 | Application ID 4536234

Letter of Offer — Unconditional

Admission to the University of Canberra — UC Canberra - Bruce Campus

Dear Santhosh,

I am pleased to advise you that your application to the University of Canberra (UC) has been successful. You will be joining one of the fastest rising universities in Australia. UC is ranked in the top 1% of Universities in the world, in Australia's top 10 Universities and is the ACT's number one ranked University for full-time employment after graduation.

Important details about your offer and your next steps are outlined below.

MASTER OF BUSINESS INFORMATICS (309JA)

CRICOS code	087618B	Campus	UC Canberra - Bruce Campus
Orientation Week start date	30 January 2023	Course start date	6 February 2023
Course duration	2 years	Course end date	31 December 2024
Credit / Advanced standing	0 credit points	Intake	Semester 1 - Commencing 6 February 2023
Indicative study period fee	AU \$17,050.00	Indicative total tuition fee	AU \$68,200.00

The course dates provided above are the anticipated dates as at the time this offer was issued. Circumstances may arise where these dates need to be amended which is in the University's absolute discretion. For the latest information on course dates please visit <https://www.canberra.edu.au/future-students/key-dates> and <https://www.canberra.edu.au/uc-college/course-dates>.

Scholarship Offer: International Merit Scholarship

You have been identified as being eligible for the International Merit Scholarship which entitles you to 10% off your annual tuition fees for the duration of your studies in the Bachelor or Master degree course stated on this offer letter. The scholarship does not apply to study undertaken at the UC College or if you elect to change your intended UC course prior to or during your study. It also does not apply to Graduate Certificate or Graduate Diploma courses studied at UC.

There are no ongoing eligibility requirements however students may not be in receipt of more than one scholarship offered by the University of Canberra and they are expected to adhere to the University of Canberra's Academic Progress policies and procedures (available at www.canberra.edu.au/Policies/). The University reserves the right to withdraw or rescind the offer of a scholarship in exceptional circumstances.

For further information please email scholarships@canberra.edu.au or visit the Scholarships page at www.canberra.edu.au/future-students/scholarships-and-financial-support



The University of Canberra acknowledges the Ngunnawal people, traditional custodians of the lands where Bruce Campus is situated. We wish to acknowledge and respect their continuing culture and the contribution they make to the life of Canberra and the region. We also acknowledge all other First Nations Peoples on whose lands we gather. CRICOS #00212K

20 July 2022 1/9



Student Comments

If you would like to be considered for a scholarship, you will need to provide an official copy of your transcript for your completed Bachelor from Presidency University.

Your next steps

Step 1: Respond to your offer

Accept your offer

- If you are a direct applicant you should accept your offer online through the [UC Online Application Portal](#).
- If you applied through an agent you will need to sign this offer letter and return to your agent who will accept your offer online on your behalf

Acceptance Deadline: Admission to the University of Canberra is competitive and places are limited. Students are encouraged to accept their offer as soon as possible. Delays in accepting the offer may result in high demand courses reaching their course quota or the students missing the final deadline for their preferred commencement date. In both these instances, the offer may need to be deferred to the next available commencement date. For a list of UC dates, visit www.canberra.edu.au/future-students/key-dates.

Defer your offer or Change your course

If you would like to defer the commencement of your course or change to a different course, please contact the Admissions office at admissions@canberra.edu.au with your preferred start date and course details. If you have applied through an Education agent, please contact your agent who can organise this on your behalf.

Step 2: Pay the Acceptance Fee to secure your place

Once your acceptance has been processed, you will be directed to arrange payment of your acceptance fee detailed below:

Total course deposit¹	+ AU \$17,050.00	Enrolment Fee*	+ AU \$0.00
Overseas Student Health Cover (OSHC)²	+ AU \$0.00	Less Scholarship Amount*	- AU \$1705
Student Services & Amenities Fee (SSAF)³	+ AU \$236.26	Less Amount Previously Paid*	- AU \$0.00
TOTAL ACCEPTANCE FEE			= AU \$15,581.26

**if applicable*

1 The total course deposit amount will be credited to your statement of account.

2 If your acceptance fee includes a dollar amount for OSHC, this indicates that the University will organise your OSHC for you. If there is no amount included under OSHC, you will be responsible for arranging your own OSHC. In this case, we recommend that you purchase your policy through the University's preferred OSHC provider, Allianz Care Australia, as they provide additional benefits to OSHC policyholders, including free medical treatment at UC Medical and Counselling Centre; no waiting periods for pregnancy cover; access to Allianz Care Australia on-campus staff members to assist with healthcare information; free Allianz Health Insurance app (offering full claim capability and medical term translator); Allianz Care Australia Telehealth Services powered by Doctors on Demand, at no extra charge and Allianz Care Australia Safety Services powered by Sonder (terms and conditions apply, for details, see <https://www.allianzcare.com.au/en/doctors-on-demand/terms.html>. To purchase your OSHC policy from Allianz Care Australia refer to <https://api.allianz.com/myquote/1?groupid=51759>



3 The SSAF is a compulsory fee paid by all students — domestic and international - at all Australian Universities. SSAF helps the University provide subsidised services to students. The SSAF quoted here is correct as of the date of this offer letter. You are required to pay the fee applicable for the year in which you commence this course. Further information on SSAF can be found at www.canberra.edu.au/ssaf.

4 The acceptance fee is the minimum amount you are required to pay to confirm acceptance of your offer and obtain a CoE. This payment is credited towards your tuition fees and as such, the acceptance fee does not necessarily reflect the tuition fees for your first period of study. Once you have enrolled, it is your responsibility to check your statement of account for each study period you are enrolled in and ensure you have paid any outstanding amounts prior to week 1 of that study period. Your statement can be downloaded from MyUC at www.canberra.edu.au/content/myuc/home/fees-and-scholarships/fees.html. See www.canberra.edu.au/future-students/accept-your-offer/payments-through-western-union for further information.

Step 3: Receive your Confirmation of Enrolment

Once your payment has been confirmed we will finalise your acceptance and issue your Confirmation of Enrolment (CoE). Your CoE is needed to apply for a student visa.

Further to your CoE, your acceptance confirmation email will include important information about arranging accommodation, and Orientation Week activities such as obtaining your student card, getting enrolled, campus tours, and more.

COVID Restrictions and Study Arrangements

Following the opening of international borders, the University of Canberra is looking forward to welcoming students to campus and recommends that all offshore students commence their visa application processes early to enable them to travel to Australia in time to commence their studies.

Students should be aware that social distancing requirements may impact the ability to deliver this course on campus and some units may be delivered by online learning. Classes will revert to on-campus once social distancing requirements permit this.

The University of Canberra will continue to monitor the COVID-19 situation around Australia and will respond according to ACT Government health advice. The most recent news, notices and updates from UC about the current COVID processes can be found at the following link: www.canberra.edu.au/coronavirus-advice.

Scholarships

The University of Canberra has a variety of scholarships on offer to assist with the cost of living and tuition fees. For further information, please visit www.canberra.edu.au/scholarships or email scholarships@canberra.edu.au.

Accommodation

For further information on accommodation options please visit www.canberra.edu.au/future-students/life-at-uc/accommodation/accommodation-guarantee.

Inclusion & Engagement

The Inclusion & Engagement team coordinates and implements services and supports to assist students with a disability and/or health condition. This is achieved through the provision of reasonable adjustments to allow equal access and participation in university life. Further information can be found online at: www.canberra.edu.au/current-students/canberra-students/student-support/inclusion-engagement/support-for-students-with-disability.


The Inclusion and Engagement team can be contacted on the following:

Phone: (02) 6201 5233

TTY: (02) 6251 4601

Email: inclusion@canberra.edu.au

Congratulations once again and we look forward to welcoming you to the University of Canberra when your studies commence.



Acceptance Declaration

I, *Santhosh Mayuram Venugopal*, student ID: 3238733, wish to accept the offer from the University of Canberra (UC) to study Master of Business Informatics as stated in the offer letter dated 20 July 2022 and by accepting this written agreement, I understand and accept that:

1. The documents I have provided to support my application are true and correct. The University reserves the right to withdraw my admission or terminate my enrolment where false or misleading information has been provided.
2. The course information and indicative fees are correct as of the date of this offer letter. International tuition fees are reviewed annually and are likely to increase. I am required to pay the set annual fee applicable for the year in which I am enrolled.
3. The annual and total tuition fees I am required to pay may vary from what is presented in my offer letter and my CoE and the actual tuition fee charged each semester may differ depending on the units in which I am enrolled in each semester.
4. The expected course start and end dates in this letter of offer are correct as at the date this offer was issued. Circumstances may arise where the University - in its absolute discretion - may amend these dates. In these cases, in accordance with the University's Statutes and Rules and the relevant legislation, the University will do the following:
 - a. Notify me via email of:
 - i. the changes to my course(s) start and end dates, the reason(s) for any changes and any additional impacts any such changes may have, for instance, on my fees or study; and
 - ii. the need to seek advice from the Department of Home Affairs on the potential impact such changes may have on my visa.
 - b. Make the appropriate changes to my enrolment information and report the enrolment changes to the Department of Education and Training.
5. In the event that the University is unable to deliver the course indicated in the offer letter, I will be notified in writing. Where available, an alternative course will be offered and I will have the option to either accept or reject the new offer. If no alternative course is available or I choose not to accept the alternative course offered, the University will provide assistance with releasing me to an alternative provider. If I am not continuing my study with the University of Canberra, I will be entitled to a refund of any unspent tuition fees in accordance with the specifications under the *Education Services for Overseas Students (ESOS) Act 2000*. The *Tuition Protection Service (TPS)* can assist me in finding an alternate course or obtaining a refund if a suitable alternative cannot be found.
6. Circumstances may arise where the University needs to change the delivery mode of a course for a period of time, for instance, from face-to-face delivery to online or distance learning delivery. If I am unhappy with the change of delivery mode, I may apply for a deferment or a leave of absence for the period of the delivery mode change, which will be assessed by the University on a case-by-case basis in accordance with the University's policies and relevant legislation. I acknowledge that any decision to grant or refuse a deferment or leave of absence is at the absolute discretion of the University taking into account all relevant factors at the time of the application.
7. If the delivery mode of a course is changed to online delivery or distance learning, I am not in Australia, and the University issues me with a Confirmation of Enrolment (CoE), this may result in circumstances where for a short period of time I may not need a student visa in order to study my course online or by distance learning. However, at all times, including when the delivery mode of a course changes to on-campus study, I am responsible for ensuring I understand Australian visa requirements and when required will obtain the relevant visa in order to travel to Australia to study at the University. If I am unable to obtain the required visa, the University may not be able to continue to deliver the course to me online or by distance learning.
8. I am required to satisfy any relevant conditions of my offer before I can enrol in my course. If the conditions of my offer are not satisfied, the University may withdraw my offer and cancel my CoE if I am the holder of a CoE.
9. I am required to arrive in Australia in time to attend Orientation Week, unless otherwise approved. If I arrive after this time without approval, I may not be permitted to enrol.
10. I accept any offer of advanced standing detailed in this letter. I have reviewed my course requirements at www.canberra.edu.au/future-students/courses/find-a-course and understand that I may be required to undertake work or community placement.
11. I am required to notify the University of my contact details in Australia, including my current residential address, mobile number, email address, and who to contact in emergency situations. I also understand that I am required to notify the University of any changes to these details with 7 days of the change.
12. I have read and understood the refund policy, attached to my offer letter. Student's wishing to apply for a refund should first read the *Refund Policy for International Students* included in their offer letter to ensure that they are eligible to obtain a



refund. Applications for refunds can be submitted through the *International Student Tuition Fee Refund Form* available on the University of Canberra's website. Please note that refunds will be processed in accordance with Australian Government requirements and may take up to 28 days after receipt of a complete refund application form. In accordance with requirements under the Education Services for Overseas Students (ESOS) Act 2000, a refund will be paid to the student or other person specified in the offer for the purpose of receiving a refund. Where applicable, Overseas Student Health Cover (OSHC) will be refunded by the University if the student has not arrived in Australia. Students who are already in Australia will be required to obtain their refund directly from the OSHC provider.

13. I understand my rights and responsibilities pursuant to the *ESOS Act* as the holder of a student visa as explained in the information for students at <http://internationaleducation.gov.au/Regulatory-Information/Pages/Regulatoryinformation.aspx>
14. I am required to comply with all student visa regulations imposed by the Department of Home Affairs (DoHA), including completion of the course within the duration as specified on my CoE (if applicable).
15. Any personal information provided to the University may be used by UC or disclosed to Australian Commonwealth & State agencies, including the Tuition Protection Service, pursuant to the University's obligations under the *ESOS Act* and the *National Code 2018* and in accordance with the Privacy Act 1988. Such information may include, but is not limited to, changes to enrolment and any breach of visa conditions relating to attendance or satisfactory academic performance.
16. The University may share my information with third-party providers.
17. If I obtain Overseas Student Health Cover (OSHC) through the University, my information will be forwarded to *Allianz Global Assistance* and I agree to enter into and be subject to the terms and conditions of the Allianz Global Assistance OSHC policy available at <https://allianzassistancehealth.com.au/en/>
18. I will be subject to the *University of Canberra Act 1989* and to the Statutes and Rules of the University.
19. I authorise the University to check the details of my migration status (study and/or work entitlements) with the Department of Home Affairs (DoHA).
20. If I am the holder of a student visa, I am a Genuine Temporary Entrant (GTE) and Genuine Student (GS) for the purpose of studying in Australia as required by the Department of Home Affairs (DoHA).
21. The University reserves the right to withdraw this offer of study where the student does not meet the University's Genuine Temporary Entrant (GTE) requirements.
22. If I am a sponsored student, I cannot change my course without receiving prior written approval from my sponsorship provider. I agree to release my information to my sponsorship provider relating to my studies, including enrolment details, academic progress, fees, and contact details.
23. If I am the holder of a student visa, I am not eligible without the University's approval to transfer to another registered provider until I have completed six months of my principal course of study or the University has issued a release letter.
24. If I am under 18 years of age during any of my study and I am the holder of a student visa, I must maintain my approved accommodation, support, and welfare arrangements until the time I turn 18.
25. This agreement and the protections provided by the University's complaints and appeals processes do not remove the right of the student to take action under Australian Consumer Law.
26. I am responsible for keeping a copy of this Offer Letter and receipts for any tuition or non-tuition payments that I make to the University.
27. The fees detailed in my offer are the minimum requirement to accept the offer. I may choose to pay more than the required amount before commencing my course, however, it is not a requirement of the University of Canberra.
28. I have sufficient funds to cover all costs associated with my study for myself and any dependents for the total duration of my time in Australia.
29. In the event that I do not have enough funds to cover the costs of my study, the University reserves the right to cancel my enrolment, and where applicable, cancel my CoE and report the cancellation to the Department of Home Affairs (DoHA).
30. I may be subject to other fees, charges and conditions not stated in my offer letter for each semester in which I enrol. The following non-tuition fees may apply as follows:

FEE DESCRIPTION	FEE AMOUNT
Course reinstatement fee where reinstatement is approved after discontinuation for non-enrolment or non-payment of fees	\$200.00
Academic Transcript - Hard Copy	\$30.00 (first transcript, \$5.00 for each additional transcript)
Academic Transcript - Digital Copy	\$15.00
Replacement Testamur Certificate	\$150.00 (Hard copy), \$50.00 (digital copy)



The University, its agents, employees, and contractors will not be liable to a student for any loss or damage arising directly or indirectly from that student's failure to make the checks specified above.

Applicant's signature:

Date:

If under 18 years

Parent/Guardian's signature:

Date:

Acceptance Declaration of **Santhosh Mayuram Venugopal (Student ID: 3238733)** to study **Master of Business Informatics** as stated in the offer letter dated 20 July 2022.

University of Canberra

Refund Policy for International Students

(Sections 29–42 of the University's International Student Fee Policy)

Fee Refunds

29. Both commencing and continuing international students are entitled to receive a full or partial refund of their fees under certain conditions.

Tuition Fees

30. The nominated prepayment amount for students accepting packaged offers to the University through Streamlined Visa Processing (SVP) partners is not refundable, except in accordance with clause 7 of this section.
31. For all other cases when a student, after accepting an offer of a place, decides to withdraw from the course:
- prior to the first day of the teaching period - the tuition fee will be refunded less an administrative charge of 10%
 - after the first day of the teaching period and before census date - the tuition fee will be refunded less an administrative charge of 50%
 - after census date – no refund of tuition fees
32. The retention of an administrative charge is in recognition of the costs associated with the processing the admission and enrolment of international students.
33. When the University withdraws the offer of a place normally 100% of the tuition fee will be refunded, except in circumstances where the offer is withdrawn because the information or documentation provided by the student is fraudulent or incorrect, in which case the University reserves the right to retain the full amount of the tuition fee and any overseas representative's fee payable by the University.
34. When the University is unable to provide the course offered to the student, the total amount paid in tuition fees will be refunded.
35. When the University does not allow the student to continue their course because of poor academic progress, 100% of the tuition fee will be refunded for any teaching period paid in advance other than the teaching period in which the suspension took place.
36. Fees paid may be fully refundable where the student has been required to withdraw under exceptional circumstances.
37. Applications claiming a refund must be made in writing and sent together with complete documentation to the Director Student Connect before the end of the teaching period for which the refund is being claimed. Claims made beyond this time will be considered only in exceptional circumstances.
38. The above refund arrangements do not remove the right of students to take further action under Australia's consumer protection laws.

Overseas Student Health Cover (OSHC) payment

39. OSHC will be refunded if the student's payment has not already been sent by the University to the preferred supplier. Otherwise the student will be responsible for applying directly to the preferred supplier for the refund.

Student Services and Amenities Fee (SSAF)

40. Students who have paid the SSAF and decide to withdraw from their course before the census date will be entitled to a full refund of the SSAF. There will be no refund of the SSAF for students who withdraw after the census date.

Payment of Refunds

41. Refunds will normally be paid within four weeks from the date of receipt of a written request for a refund from the student. In the event that the University of Canberra is unable to provide a course of study, refunds will normally be paid within two weeks.
42. Refunds will be paid only in Australian Dollars. Refunds are normally made in the form of a bank draft or Electronic Funds Transfer (EFT) direct to the student, or to the person or sponsoring body paying fees on the student's behalf. Refunds will be paid only following full payment of any outstanding debts owed to the University, such as library fines, late fees or student loans.

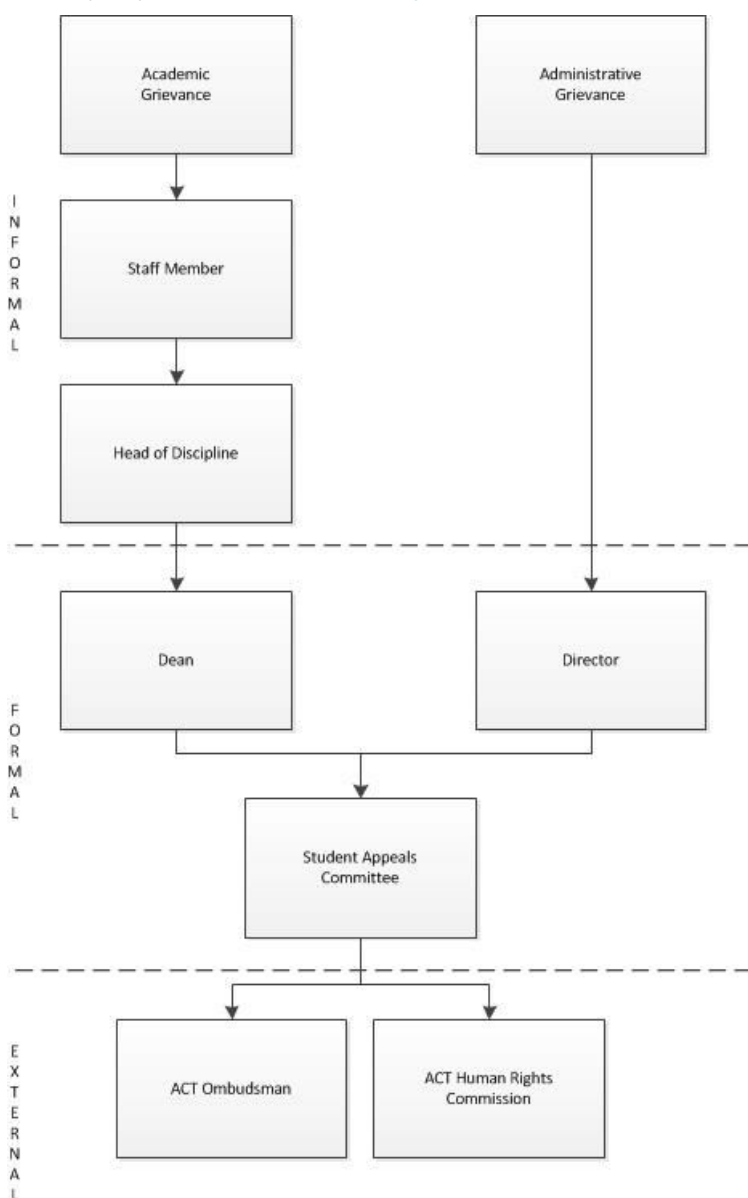


University of Canberra Student Grievance Resolution Policy

Steps in Student Grievance Resolution Process

A student may elect to approach any staff member of the University to seek to resolve a grievance; however, the University's preference is that student grievances are addressed as close as possible to the source of student dissatisfaction. This flowchart identifies the most appropriate party to consider a student's grievance at each step of the student grievance resolution process. Having commenced the grievance process, a student may elect to withdraw from the process, accept the decision made by the relevant party at any stage of this process (whether in the student's favour or not) or to proceed to the next decision-maker identified in this flowchart to seek review of the decision made by the preceding party.

The full policy can be found online at: <https://www.canberra.edu.au/Policies/PolicyProcedure/Index/371>.



06 September 2022

STORM INTERNATIONAL GROUP PTY LTD - INDIA

MR VAMSI PADMA RAMA KRISHNA SANNIDHI
4-37/1,MAIN RD,GOGULAMMA TEMP,PENUMADAM
PODURU MANDALAM,WEST GODAVARI
ANDHRA PRADESH 534267
INDIA

Dear **Mr Vamsi Padma Rama Krishna Sannidhi**
Monash Student ID: 33509166 (Please quote in all correspondence)

Once again, congratulations! We are very excited that you will be joining our student body. Monash is Australia's largest university and one of the most highly regarded in the world. Our students and academics are renowned for their drive and innovation, and for making a genuine contribution to people's lives.

If your application contained multiple preferences, we have offered you the first preference for which you were eligible. Your original application preferences can be viewed in the submitted application section of your my.app home page. In some instances, we may have added pathway courses which will allow you to meet entry requirements for your original course preference once passed.

Your International Student Course Agreement (ISCA) contains your full offer of the following:

Course (Course Code): Master of Professional Engineering (E6011)

For guidance on how to accept this offer or next steps you can refer to our [Quick Reference Guide](#). If you have any other questions regarding this offer contact us via [Online Enquiry Form](#).

We look forward to seeing you commence your journey towards a successful career with a Monash qualification.

Yours sincerely



Natalia Yap-Gunawan
Associate Director
Admissions

INTERNATIONAL STUDENT COURSE AGREEMENT

Official Monash University Documentation

This Agreement is made up of Part A (Monash's offer) and Part B (the terms and conditions of your offer).

In this Agreement:

- **"course"** means a course of education or training as defined by the *Education Services to Overseas Students Act 2000 (ESOS Act)*. For more information on the Education Services for Overseas Students [ESOS] framework, visit <https://www.dese.gov.au/esos-framework>
- **"Monash"** means variously Monash University (CRICOS code 00008C) and Monash College Pty Ltd (CRICOS code 01857J) except where the context indicates otherwise
- All monetary amounts are expressed in Australian Dollars (AUD \$) unless explicitly stated otherwise
- Tuition fees are based on the tuition fees calendar year quoted with each course. If you are offered a place in a course commencing in a different year, your tuition fees may be different. Monash sets their fees for commencing years approximately 6 months prior to start date.
- Allianz Care OSHC premiums are based on the current year pricing, this may change for later intakes.
- **"you"** means Mr Vamsi Padma Rama Krishna Sannidhi

PART A: MONASH'S OFFER

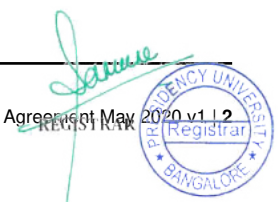
Monash makes the following offer to you, subject to the Offer Terms and Conditions in Part B.

This offer replaces any previous offer made to you by Monash, conditional or otherwise. These offers are now withdrawn.

This offer must be fully accepted by signing and following all acceptance steps on or before 31 January 2023, otherwise it will expire.

PERSONAL DETAILS

Monash Student ID	33509166	Gender	Male
Legal Family name (as in your passport)	Sannidhi	Postal Address	4-37/1,MAIN RD,GOGULAMMA TEMP,PENUMADAM PODURU MANDALAM,WEST GODAVARI, ANDHRA PRADESH 534267 India
Legal Given Name(s) (as in your passport)	Vamsi Padma Rama Krishna	Telephone (with country code)	91 9533725966
Date of Birth	07/10/2001	Email	vamsisannidhi07@gmail.com
Name of agent	STORM INTERNATIONAL GROUP PTY LTD - INDIA		



VISA DETAILS

What is your Country of Birth?

Country of Birth:

What is your current visa status? (select one)

- I will be getting an Australian Student Visa
- I have an Australian Student Visa
- I have an Australian Temporary Visa that allows me to study in Australia

If you will be applying for a Student Visa, will you be outside Australia when you apply?

- Yes
- No

If you already have an Australian Visa please provide the details below:

Visa number: _____

Visa START: DD/MM/YYYY ___/___/___

Visa END: DD/MM/YYYY ___/___/___



INTERNATIONAL STUDENT COURSE AGREEMENT

OFFER DETAILS

Monash University Offer	START DATE: 27 February 2023 END DATE: 31 December 2024		
(Monash course code) Course name	(E6011) Master of Professional Engineering		
Specialisation/Program	Civil engineering (Structure)		
Course information	Please refer to https://www.monash.edu/study/courses/find-a-course/2022/E6011 for more information concerning modes of study, including compulsory online and/or work-based training, placements, and/or other community-based learning and/or collaborative research training arrangements		
CRICOS course code	102717C		
Registered Provider	Monash University (CRICOS code 00008C)		
Campus	CLAYTON		
Course duration	2 Year(s) with credit exemptions. Note, the course duration without the credit exemptions is 3 Year(s)		
Mode of Study	Full time. For more information about modes of study please refer to the course information link above.		
Credits points required to complete this course	96 credit points are required to complete this course Note the credit points required to complete this course without credit exemptions is 144 credit points.		
2023 Calendar tuition fees – based on 48 credit points	\$50,200.00	Estimated total tuition fees payable to complete this course with credit exemptions	\$100,400.00 (Note the estimated total tuition fees without exemptions is \$150,600.00)
Other study costs	In some circumstances other study costs may apply. Further information can be found here: https://www.monash.edu/fees/other-costs/study		

PLEASE NOTE:

Important note: Original or certified and notarised* copies of your supporting academic documents must be provided to Monash University upon request. This may occur at course enrolment or at any time following commencement of the course. *notarised documents is applicable to qualifications from China only

In the event that any documents presented in support of your application are found to be fraudulent, altered in any way or fail to meet academic and English entry requirements, Monash University may withdraw this offer and cancel your enrolment at any time as per item 2 of our Offer Terms and Conditions. Please ensure you have all your supporting academic documents with you when you start your course at Monash. You can get more information about certification of documents at <https://www.monash.edu/admissions/apply/help/documents>

Monash University will provide on-campus learning for students in line with current State Government restrictions.

If you're currently based in Australia, it's expected that you will be in Victoria and prepared to attend on-campus activities from the commencement of the semester. There may be online options available to you, however these options cannot be guaranteed in all circumstances. Preference will be given to those students who are unable to physically attend campus due to travel and/or state border restrictions: (<https://www.health.gov.au/health-alerts/covid-19/domestic-travel>),

or Federal Government COVID-19 health advice:

(<https://www.health.gov.au/news/health-alerts/novel-coronavirus-2019-ncov-health-alert#advice-for-people-most-at-risk>)



INTERNATIONAL STUDENT COURSE AGREEMENT

If you're currently based overseas, you will be supported with online study options to commence your study. You will be able to catch-up on any placements or laboratories that are essential to your accreditation requirements and learning outcomes once you arrive on campus. Some courses with accrediting bodies will have requirements for practical milestones - please contact your course coordinator for more information.

The flexibility and richness of Monash online learning experience means the outcomes of your online degree is the equivalent to that of an on-campus degree. Our investment in infrastructure, technology and support has resulted in a world class educational offering and positive successful completion and pass rates.

We look forward to welcoming all of our students back to our campuses. We'll continue to update the Monash community accordingly and you can visit our COVID-19 fact sheet at <https://www.monash.edu/news/coronavirus-updates> for more information.

If you are intending to apply for credit for prior studies, you must do so before the commencement of your first semester of study in any Monash Engineering Masters degree. Credit will not be considered after the commencement of your studies.

It is an Engineers Australia accreditation requirement that 420 CPD (Continuous Professional Development) hours are completed while enrolled in the Master of Professional Engineering. If you are entering the Master of Professional Engineering degree and already have an accredited undergraduate Engineering degree from a University other than Monash University please note that no exemption will be given towards this component - you will still be required to complete the 420 CPD hours.

If you are entering the MPE and have an undergraduate Engineering degree from Monash University please contact us via our Online Enquiry form at <https://www.monash.edu/study/international/contacts/student-enquiries/post-application>

New students are required to have one of the following scientific calculators for use during engineering examinations in some units:

- Casio FX-82AU (any version) OR
- Texas Instruments 30XB or XS

All students who apply to Monash University or Monash College must disclose their complete academic history and provide academic documentation for all qualifications previously undertaken. This offer will be rendered INVALID if you undertake any further academic studies between the date of your last qualification and commencement at Monash University. In the event where you have failed to disclose your full academic history, Monash University or Monash College may withdraw this offer and cancel your enrolment at any time as per item 2 of our Offer Terms and Conditions. Additional results or any revised transcripts of attempted studies should be forwarded to Central Admissions, Monash University for review.

You will be issued with a Monash award upon successful completion of the course. If you intend to rely on this award for entry to a specific professional institution, government agency or other institution, please make direct enquiries with the relevant institution to ensure that the course meets their requirements. Their entry requirements may also affect the course/units that you select at Monash.

We advise all international students to arrive at least three weeks before the course starts to settle and attend orientation events.

OFFER PAYMENT INFORMATION

Offer	Fee Type	Amount Payable in Australian dollars A\$
Monash University – Master of Professional Engineering (E6011)	Deposit	\$12,550.00



INTERNATIONAL STUDENT COURSE AGREEMENT

OSHC - To be paid to Monash at the same time as the deposit Deposit \$1,440.00

Single

Covers only one valid student visa holder; i.e. you

OSHC - To be paid to Monash at the same time as the deposit Deposit \$5,200.00

Dual Family

Covers only one valid student visa holder plus either one adult spouse, or recognised de-facto partner, or one or more dependent children; i.e. you and a spouse/partner OR you and your children

OSHC - To be paid to Monash at the same time as the deposit Deposit \$8,034.00

Multi Family

Covers one student visa holder plus one adult spouse or recognised de-facto partner, and one or more dependent children; i.e. you AND a spouse/partner AND your children

OSHC

I will nominate my own health insurance provider

Please note - If you choose to provide your own health insurance, you will need to upload proof of your OSHC in the documents section after accepting your offer.

PAYMENT OPTION

Please follow the instructions specified in the payment option you chose below

Western Union Business Solutions Pay 24-7 – Monash University preferred payment methods

Please go to: <https://www.monash.edu/students/admin/fees/payment/options>

You can pay by credit card or fund transfer via this option. After payment, Western Union will send you a confirmation receipt, by email. Please include a copy of the Western Union confirmation email when you return this Part B of your International Student Course Agreement and other necessary documents to Monash.

Other bank transfers – Telegraphic transfer or electronic funds transfers

Use the following account details to transfer the funds:

- **Account name:** Monash University Fees Account
- **Bank name:** Westpac Banking Corporation
- **Branch address:** Campus Centre, Monash University Clayton Victoria 3800
- **BSB:** 033 289
- **Account no:** 63-0732
- **SWIFT code:** WPACAU2S

Please attach a copy of the Telegraphic Transfer receipt that will be given to you by your bank.

Note: You must provide your bank with your Monash Student ID so that it can be used as a reference number for the transaction.

Bank draft or bank cheque – Payable to Monash University in Australian dollars (A\$)

Note: you must include your Monash Student ID.

If you are receiving a sponsorship or scholarship from a private or government organisation that covers full or part of your course fee, please attach a copy of your financial affidavit or guarantee – as your course fee will be invoiced to your sponsor on receipt of this documentation. More information on applying for a student loan scheme/financial aid from your home country is available at <https://www.monash.edu/students/admin/fees/aid>



INTERNATIONAL STUDENT COURSE AGREEMENT

ACCEPTANCE DECLARATION

I acknowledge and declare that:

- a) I have read and understood this Agreement, which is made up of both Part A and Part B;
- b) my enrolment at Monash will be governed by this Agreement; and
- c) by completing and signing this Agreement before the offer expiry date and providing the required deposit and documentation, I agree to undertake the course/s accepted in accordance with this Agreement.

Signature:

Date:



INTERNATIONAL STUDENT COURSE AGREEMENT

PART B: OFFER TERMS AND CONDITIONS

It is important that you read and understand the terms and conditions in this section as it lists the rules by which you will be expected to abide by as well as how your International Student Course Agreement (ISCA) will be handled and managed by Monash. Acceptance of these terms and conditions is necessary to accept your offer.

1. Your information

- 1.1. You warrant that the information you provide in this Agreement is true, complete and correct. If you supply or supplied false, incomplete or misleading information, either in your course application, in this Agreement or at any time thereafter, Monash may withdraw this offer and/or cancel your enrolment at any time, and you consent to Monash then notifying Australian Government agencies and designated authorities of the change to your enrolment which may result in the cancellation of your visa.
- 1.2. You authorise Monash to access information relating to your visa status from third parties, including via the Australian Government's 'ImmiAccount' and VEVO (Visa Entitlement Verification Online) facilities. You authorise Monash to obtain information about you from any testing centre, educational institution, or professional body previously or currently attended by you for the purposes of confirming your application details or confirming that you subsequently meet the conditions of your offer.
- 1.3. You have read and understood Monash's statement on privacy available at <http://www.privacy.monash.edu.au/> and <http://www.monashcollege.edu.au/privacy> and agree with the purposes for which your personal information will be used and disclosed.
- 1.4. You acknowledge that Monash is able to release your personal information (e.g. contact details, course enrolment, breaches of your student visa conditions) to any Australian, State or Territory Government agency under the ESOS Act and when required or otherwise permitted under applicable law or legislation, or as set out in the Monash University Student Data Protection and Privacy Collection Statement available at <https://www.monash.edu/privacy-monash/privacy-collection-statements> and the Monash College Student Privacy Collection Statement available at <https://www.monashcollege.edu.au/privacy>. You acknowledge that this personal information can be disclosed by Monash without your explicit future consent.
- 1.5. If you have received sponsorship for your study and/or you are under the age of 18, you give permission for Monash to provide your sponsor, parent, legal guardian or Monash appointed student guardian with information about your visa status, enrolment and academic progression and any known issues or incidents affecting your wellbeing, or academic progress in any course you undertake at Monash.
- 1.6. If you accept this offer you will be bound by:
 - 1.6.1. the Monash Student Charter <https://www.monash.edu/students/admin/policies/student-charter> and applicable statutes, regulations, policies and procedures of Monash University <https://www.monash.edu/students/admin/policies> while you are a student at Monash University and
 - 1.6.2. applicable policies and procedures of Monash College <https://www.monashcollege.edu.au/about-us/policies-procedures> as amended from time-to-time) while you are a student at Monash College.
- 1.7. You agree to abide by the Student Charter, statutes, regulations, policies and procedures as applicable under clause 1.6 and if there are any inconsistencies, the Student Charter, statutes, regulations, policies and procedures will prevail over this Agreement.
- 1.8. You are responsible for keeping a copy of this Agreement, once signed, and receipts for any payments of fees made to Monash.

2. Your visa

- 2.1. You warrant that you do not hold Australian or New Zealand citizenship and are not a permanent resident of Australia, and that you are a Genuine Temporary Entrant for the purposes of 'Direction No 69 Assessing the Genuine Temporary Entrant Criterion for Student Visa and Student Guardian Visa Applications' given under s499 of the Migration Act 1958, or like direction. For further information concerning student visas, you can reference <https://www.monash.edu/study/how-to-apply/international-student-applications/visa-requirements>.
- 2.2. If during the term of this Agreement your visa status changes so that you become either an Australian Permanent Resident or an Australian or New Zealand Citizen, then this Agreement will terminate with effect immediately and you must contact the relevant Faculty for information about applying to study as a domestic student in Australia.



INTERNATIONAL STUDENT COURSE AGREEMENT

- 2.3. You understand that there are additional steps necessary for obtaining a Student Visa (subclass 500). Once you are issued with a Confirmation of Enrolment (CoE), you must take the steps necessary for obtaining a Student Visa (subclass 500). Specifically you should review the 'Gather your documents' section and use the Document Checklist tool on the Department of Home Affairs website <https://immi.homeaffairs.gov.au/visas/getting-a-visa/visa-listing/student-500#HowTo> to understand the types of evidence you will need to provide in support of your visa application. This may include proof of family relationships, Genuine Temporary Entrant statements, proof of financial capacity, and proof of English language proficiency.
- 2.4. If you will be under the age of 18 at the time of arrival in Australia for study at Monash and hold, or plan to obtain, a student visa, it is your responsibility to make the necessary guardianship and accommodation arrangements that satisfy Monash and Australian Government requirements. Your parents or legal guardian must provide all the relevant information to Monash as outlined at <https://www.monash.edu/students/international/under-18> for a course commencement at Monash University or <https://www.monashcollege.edu.au/life-at-monash-college/under-18s> for a course commencement at Monash College before your accommodation and welfare arrangements can be approved. This information is required to process acceptance of this offer.
- 2.5. You accept the responsibility of obtaining, holding and complying with a visa that permits you to study full-time in Australia for the duration of your course. You are advised to commence the student visa application process as soon as you have been issued with your CoE. A CoE will only be issued once you have accepted your offer of a place at Monash by signing this Agreement, providing any additional information for acceptance of this offer (e.g., passport details; if under 18, acceptance of this offer by your parent or legal guardian), and meeting any required minimum payment obligations.
- 2.6. If issued a **conditional** CoE, you accept responsibility for ensuring that you meet any outstanding conditions **prior** to your arrival in Australia. Failure to do so may result in revocation of your offer and your student visa being cancelled.
- 2.7. It is your responsibility to ensure that your student visa is obtained in sufficient time for you to arrive at Monash by the required arrival date for your orientation in preparation for your studies. The required arrival date for this offer is stated in Part A.

3. Overseas Student Health Cover (OSHC)

- 3.1. It is a condition of student visas that visa-length OSHC be purchased and maintained for the duration of your visa: https://www.privatehealth.gov.au/health_insurance/overseas/overseas_student_health_cover.htm. Failure to have OSHC may result in you being non-compliant with the requirements of your student visa. If you are accompanied by immediate family to Australia, you must also purchase and maintain visa-length OSHC for them.
- 3.2. If your particular visa type does not require that OSHC be obtained for you or your family you must indicate this in Part A.
- 3.3. There are exemptions for Norwegian, Swedish and Belgian students where OSHC is not required when on a student visa. Refer to:
 - https://www.privatehealth.gov.au/health_insurance/overseas/overseas_student_health_cover.htm
 - <https://immi.homeaffairs.gov.au/visas/getting-a-visa/visa-listing/student-500#Eligibility> - click on 'Check your eligibility' link found mid-page and expand the 'Have adequate health insurance' section.If you meet the exemption requirements you must indicate this in Part A.
- 3.4. If your sponsor is responsible for payment of your OSHC, you must indicate this in Part A and provide a financial affidavit or guarantee from your sponsor to Monash stating the type and length of cover.
- 3.5. You may purchase health cover through Monash's preferred provider, or you may arrange OSHC through another provider.
 - 3.5.1. If you choose to purchase OSHC through Monash you will need to indicate the type of cover you wish to purchase in Part A:
 - a) **single** covers only one valid student visa holder; i.e. you
 - b) **dual family** covers only one valid student visa holder plus either one adult spouse, or recognised de-facto partner, or one or more dependent children; i.e. you and a spouse/partner OR you and your children



INTERNATIONAL STUDENT COURSE AGREEMENT

- c) **multi-family** covers one student visa holder plus one adult spouse or recognised de-facto partner, and one or more dependent children; i.e. you AND a spouse/partner AND your children
- 3.5.2. If you choose to purchase OSHC through Monash's preferred provider, Monash will facilitate the scheduling of your OSHC policy with Allianz Care, including the provision of your personal details required to schedule your policy. Note: the OSHC fee quoted on this agreement is based on information available from Allianz Care at the time that this offer was made, and is subject to change by Allianz Care. Information on Allianz Care along with its most up to date OSHC price list can be found at <https://www.monash.edu/students/admin/fees/other-costs/overseas-health-cover>.
- 3.5.3. If you choose to purchase OSHC through a non-Monash provider, you will need to indicate this in Part A along with the provider's name, and provide evidence to Monash from the provider of the type and length of your cover.
- 3.6. If you indicate purchase of OSHC through Monash, and payment is less than the required amount, Monash may, at its election, either (a) allocate part of a tuition fees payment to make up the shortfall of the OSHC amount owed and you will be required to pay this amount to Monash when you arrive, or (b) contact you and you will be required to make additional payment of the outstanding OSHC amount immediately.
- 3.7. If you wish to accept only part of a packaged offer, defer your commencement, or undertake a program extension, the relevant OSHC premium information can be obtained from: <https://www.monash.edu/students/admin/fees/other-costs/overseas-health-cover/calculator>. Your OSHC is based on the start and end dates of your student visa for study in Australia.

4. Studying at Monash

- 4.1. Before you can enrol in your course or program, you must continue to meet the entry requirements for your course or program which includes satisfying any conditions outlined in this Agreement. If you fail to meet entry requirements or to satisfy any conditions outlined in Part A, you will not be allowed to enrol and cannot commence your course. In these circumstances, Monash may, at its option, terminate this Agreement and cancel your CoE.
- 4.2. Upon request by Monash, you will be required to present originals, certified copies, or notarized copies of documents provided online with your course application after you have commenced your course. We strongly advise that you bring official copies of your results and tests with you to Australia to avoid undue delay in providing these documents to Monash when requested. Failure to present documents when requested may result in Monash terminating this Agreement, cancelling your enrolment and cancelling your CoE.
- 4.3. You confirm that you have read and understood the description of your course(s) and understand that all teaching and assessment is conducted in English unless otherwise stated (i.e. language other than English units). Monash may require you to undergo a test of English proficiency if it has concerns about, or is unable to assess, your level of English proficiency. Each course/program within Monash has differing levels of English proficiency required for entry and by accepting this offer you confirm that you have exercised your independent judgement and agree that you have the level of English language required to succeed with this course.
- 4.4. You understand that Monash does not warrant that your enrolment in, or completion of, a course or program will enable you to obtain any particular employment or to remain in Australia upon completion of the course.
- 4.5. The course offer in this Agreement does not represent a completed qualification or award of Monash University or Monash College Pty Ltd. This Agreement describes education and ancillary services offered to you in response to your course or program application and indicates that you have been assessed as meeting any entry criteria at a level sufficient to commence the offered Monash course or program only (upon meeting any conditions set out in Part A). It does not guarantee the obtainment of a conferred qualification or award of Monash University or Monash College Pty Ltd.
- 4.6. You will advise Monash within seven (7) days of any changes to your current residential address in Australia, mobile number (if any), email address, and details of whom to contact in emergency situations while you are enrolled at Monash.
- 4.7. You must enrol in your course before your course commencement date or by the required enrolment date as set out in Part A. If you do not enrol by the required date, your offer will expire and you will be required to reapply. Requests for late enrolment (after the required enrolment date or commencement of the course) is at the discretion of Monash and permission to enrol late is not guaranteed. Decisions to allow late enrolment may take time to adjudicate so do not leave these requests to the last minute. It is recommended that your request for late enrolment is received by Monash at least two (2) weeks before the required date.



INTERNATIONAL STUDENT COURSE AGREEMENT

- 4.8. You must arrive at Monash no later than the required arrival date, and you should endeavour to arrive by the recommended arrival date, if relevant, set out in Part A of this offer. If you are unable to arrive by the required arrival date you must seek approval to arrive late. Not all requests for late arrival are granted, so It is important to contact Monash as soon as possible to request permission to arrive late. It is recommended that these requests are received at least two (2) weeks before the required arrival date. Late arrival with no prior approval may result in you being unable to commence the course.
- 4.9. If you are unable to enrol or commence the course by the dates in this Agreement, you may elect to defer your course offer. Applications for deferral are not automatically approved. If your deferral is approved, you must continue to meet all entry standards for your course or program for the negotiated future commencement date including proof of English proficiency. If granted, you will be issued a revised ISCA and will need to accept the new offer:
- 4.9.1. [Monash University coursework](#) – generally granted for up to 12 months
- 4.9.2. [Monash University graduate research programs](#) – granted on a case by case basis
- 4.9.3. [Monash University exchange and study abroad programs](#) – generally not granted but when granted are no more than one semester
- 4.9.4. [Monash College \(e.g. Diploma courses\)](#) – generally granted for up to 12 months
- 4.9.5. [Monash University Foundation Year \(MUFY\)](#) – generally granted for up to 12 months
- 4.9.6. [Monash University English Language Courses \(MUELC\)](#) – generally granted for up to 12 months
- If the desired deferral period for the course or program exceeds the relevant 'generally granted' maximum period set out above, you may need to re-apply to Monash for admission into the future intake, and Monash makes no warranty or promise that an offer will be made.
- 4.10. If you do not enrol or arrive by the dates set out in this Agreement, and have not been granted a deferral, Monash is required by the ESOS Act to report you to the Australian Government and cancel your CoE.
- 4.11. You will attend all required formal and informal course or program sessions as outlined in your relevant handbook, policies and procedures (e.g. classes, supervised study sessions and assessment sessions), undertake all compulsory assignments and assessments, and strive to meet satisfactory progress in your coursework or program milestones. You will seek appropriate assistance from Monash lecturers, tutors, counsellors and other support staff if you experience difficulties with any aspect of your course, or welfare.
- 4.12. If you are being offered a packaged offer, note that Monash College Pty Ltd and Monash University are separate educational institutions and only Monash University offers tertiary level courses. Upon successful completion of a Monash College Pty Ltd component at the required standard for and subsequent admission to, a Monash University course of study, you will be considered to be a commencing student at Monash University. Enrolment in a Monash College Pty Ltd course of study does not give you the status of a 'continuing' student at Monash University, for tuition fees or any other purpose.

5. Tuition and non-tuition fees

Tuition fees amounts in this section are referring to the **amount of tuition outlined in Part A of your Agreement**. If the tuition fees amount is zero, you should still be aware of the terms and conditions concerning fees at Monash.

- 5.1. Formal acceptance of this offer involves paying a tuition fees deposit when required and, where applicable, an administration fee, by the offer expiry date along with the signed return of this offer. You must indicate the amounts to be paid for tuition and other items in Part A of this Agreement (this may be pre-filled for you if your ISCA can be accepted online), and provide proof of payment of these amounts to Monash. If the minimum required payments are not made by the offer expiry date, this offer will expire and a further offer may not be made to you. Payments made for expired offers will be handled by the Monash refund procedures as set out in this Agreement.
- 5.2. If there is a balance due for tuition fees for the commencing teaching period, Monash will invoice you for the balance of that teaching period's fees and any other relevant fees after enrolment. Tuition fees for teaching periods will be invoiced as per the dates listed here:
<https://www.monash.edu/students/admin/fees/payment/dates>. If you are receiving a sponsorship or scholarship from an organisation other than Monash that covers all or part of your tuition fees, your tuition fees will be invoiced to your sponsor or scholarship provider. You must provide a financial affidavit or guarantee from your



INTERNATIONAL STUDENT COURSE AGREEMENT

sponsor or scholarship provider as part of acceptance of this offer. Financial affidavits or guarantees must be in English.

- 5.3. The tuition fees set out in Part A will not change except in accordance with this Agreement.
- 5.4. Monash generally sets course fees for the upcoming calendar year, six (6) months in advance. Therefore if you are not scheduled to commence your course in the calendar year shown in Part A, or arrange to defer your course commencement date, your tuition fees may be different to the fees set out in this offer. To determine the exact tuition fees for your commencing intake, you can check the updated amount for your course at <https://www.study.monash/courses> or <https://www.monash.edu/study-abroad/inbound/before-you-arrive/financial-information> once they have been published. You will be charged for any difference between the tuition fees in Part A and the actual updated tuition fees for your commencing year after enrolment.
- 5.5. The tuition fees quoted in Part A are based on the calendar year stated and for a standard 1.0 Equivalent Full-Time Study Load (EFTSL) of 48 credit points per year. Any student enrolled in more or less than 48 credit points per year (e.g., intensive courses or exemptions) will be invoiced in accordance with their study load. Students will be invoiced for the total value of enrolled units at the start of the relevant teaching period.
- 5.6. Monash reserves the right to adjust tuition fees for future years of your course. Adjustments will be applied on the first day of January each year for teaching periods with a census date thereafter.
- 5.7. If you are awarded and accept any credit exemptions towards your course **after** you have accepted this offer, the tuition fees and the duration of your course will be adjusted proportionally for the credit points/load of your enrolment. You will be issued with new CoE if your course duration has changed as a result of the awarded credit.
- 5.8. If you withdraw from all studies at Monash, and subsequently want to continue your Monash course, you will be required to re-apply for entry to the course. Future offers are not guaranteed, and will be subject to a new ISCA being entered, which will contain new tuition fees.
- 5.9. If you choose to pay more than the minimum tuition fees deposit and/or if the tuition fees paid exceeds your actual teaching period tuition charge because of your enrolment load, you authorize Monash to allocate that overpayment towards your next teaching period's tuition fees. If wish to use part/all of these pre-paid fees to pay for another course or administration fee at Monash, you authorize Monash to transfer the pre-paid fees towards the new course.
- 5.10. There may be non-tuition fees associated with your course or program. Non-tuition fees are an amount of money that Monash receives from a student or someone on behalf of a student, that is not for tuition. Non-tuition fees include but are not limited to:
 - 5.10.1. any money other than tuition fees payable to Monash or a Monash partnered institution that must be paid for the student to gain admission into, or progress through, their course;
 - 5.10.2. administrative charges such as any fees payable to review an assessment mark or final subject mark, defer a course of study, or as a penalty for late payment of tuition fees;
 - 5.10.3. any cost of additional support required to undertake study due to a medical condition not listed as covered by Monash <https://www.monash.edu/students/support/disability>;
 - 5.10.4. administrative charges resulting in the assistance of the student to apply for or hold a student visa;
 - 5.10.5. textbooks, reading materials or specialty equipment whether compulsory or optional;
 - 5.10.6. accommodation;Current Monash non-tuition fees can be found here and may depend upon which units you enrol in: <https://www.monash.edu/students/admin/fees/other-costs>
- 5.11. You declare that you have sufficient funds to finance the costs of tuition (including tuition fees), living expenses, return airfares, non-tuition fees and any other incidental costs for yourself for the duration of your course. The following references are available for your consideration:
 - <https://www.monash.edu/study/why-choose-monash/our-locations/life-in-melbourne/cost-of-living>
 - <https://www.studyaustralia.gov.au/english/live/living-costs>
- 5.12. You declare that you have sufficient funds to finance educational and other living costs and expenses of any person or dependents who accompany you to Australia for the duration of your course. If you have any school-aged dependents accompanying you to Australia then they must attend school, and you are responsible for the full fees they are required to pay if enrolled in either a government or a non-government school.



INTERNATIONAL STUDENT COURSE AGREEMENT

6. Monash obligations

- 6.1. Monash shall use its reasonable efforts to provide the course as advertised, but may at its sole discretion alter any part of the course, including but not limited to a practical training requirement, and may postpone or cancel the course.
 - 6.1.1. If for whatever reason (including due to circumstances outside of Monash's control), it is impossible for you to be physically present in Australia for training requirements that your course requires you to undertake in person (such as medical and teaching practicums), and you cannot progress your course without undertaking that relevant study component, you will need to defer or intermit (as applicable) the course until you are able to physically be in Australia to undertake the relevant study component.
- 6.2. Monash makes no guarantee that:
 - 6.2.1. there are unlimited places available in the course. Places in the course are allocated in order of acceptances received, and once all places are allocated, the course will be deemed full and this course offer will not be able to be accepted by you. In this case, you may request to defer your offer to a future intake that is not full which will result in a new ISCA for you to accept.
 - 6.2.2. every course will be offered in any particular teaching period. Courses offered in any specific teaching period are subject to change by Monash from time to time.
- 6.3. Monash is obliged to notify Australian Government agencies and authoritative bodies of any changes to a student's enrolment status.

7. Termination

- 7.1. Monash may terminate this Agreement and cancel your enrolment as a student of Monash, upon the provision of seven (7) days written notice, if:
 - 7.1.1. You are in default of terms within this Agreement. Examples of when you will be in default of this Agreement include, but are not limited to:
 - a) You have not arrived in Australia and commenced your course by the course commencement date, provided that you have not previously been granted a deferred commencement date, and Monash is providing the course on the commencement date
 - b) You fail to pay an amount you were required to pay to Monash directly or indirectly to undertake the course
 - c) You breach a condition of your student visa
 - d) Your behaviour, provided Monash has accorded you natural justice before enacting this, is deemed to be in breach of Monash's statutes, regulations, policies and procedures
 - 7.1.2. In the reasonable opinion of Monash, your becoming or remaining a student of Monash may place it in breach of any applicable law, including a law that implements United Nations (UN) sanctions
 - 7.1.3. In the reasonable opinion of Monash, you are not a Genuine Temporary Entrant for the purposes of 'Direction No 69 – Assessing the Genuine Temporary Entrant Criterion for Student Visa and Student Guardian Visa Applications', given under s499 of the Migration Act 1958, or like Direction
 - 7.1.4. In its absolute discretion, Monash considers it appropriate to do so.
- 7.2. You may terminate this Agreement and cancel your enrolment as a student of Monash for any reason, upon the provision of seven (7) days written notice. Your right to a refund of fees or obligations to pay any further fees to Monash will be determined in accordance with this Agreement.
- 7.3. You request, in writing, a transfer to another institution. Monash will determine a request to transfer you to another institution in accordance with Monash's [Enrolment and Timetable Policy](#) and [International Student Transfer between Registered Providers Procedures](#). If the request is approved, Monash will terminate this Agreement and cancel your enrolment as a student of Monash. Your right to a refund of fees or obligation to pay any further fees to Monash will be determined in accordance with this Agreement.

8. Refund of fees

- 8.1. Non-tuition fees and other study costs are normally not refundable, but some faculties may consider refunds in exceptional circumstances and should be contacted for further advice. In the case of fees paid to Monash



INTERNATIONAL STUDENT COURSE AGREEMENT

Residential Services for accommodation, contact Monash Residential Services if seeking a refund (<https://www.monash.edu/accommodation>).

8.2. Full refund of tuition fees (excluding Monash College English Language Courses)

A full refund of all tuition fees paid for the current teaching/research period and future teaching/research periods (including tuition deposit fees for courses to be undertaken in future teaching/research periods as part of a packaged offer) will be made:

- 8.2.1. in the event that the offer set out in this Agreement is withdrawn by Monash prior to your commencement in the course.
- 8.2.2. if Monash makes this offer on the basis of incorrect or incomplete information being supplied by you, or from any person on your behalf, to Monash and this Agreement is terminated prior to your commencement in the course.
- 8.2.3. where Monash is unable to provide the course in this Agreement, the course has not commenced, and you do not accept an alternative course offer.
- 8.2.4. where you give written notice of your inability to undertake the course on or before the current teaching/research period census date due to:
 - a) illness or disability preventing you from studying the course and you supply documentary evidence of the illness or disability that is accepted by Monash as being sufficient; or
 - b) death of a close family member (parent, sibling, spouse or child) preventing you from studying the course and you supply documentary evidence of the death that is accepted by Monash as being sufficient; or
 - c) your exclusion from Monash University for reasons other than misconduct pursuant to Part 7 or 13 of the Monash University (Council) Regulations, or by Monash College pursuant to the Academic Progress Policy or Student Code of Conduct; or
 - d) your exclusion from Monash University for reasons other than those pursuant to section 14 of the Monash University (Vice Chancellor Regulations); or
 - e) other special or extenuating personal circumstances preventing you from studying the course, and you supply documentary evidence of these circumstances that Monash University accepts as sufficient (as determined at the discretion of the Associate Director, Student Finance)

8.3. Partial refund of tuition fees (excluding Monash College English Language Courses)

A partial refund of tuition fees paid for current and future teaching periods will be made to you if:

- 8.3.1. you do not satisfy a condition of the offer set out in Part A of this Agreement (if applicable). A refund of all tuition fees paid for the relevant teaching/research period and tuition deposit fees for courses to be undertaken in future teaching periods as part of a packaged offer will be made, minus \$500 per course not to be undertaken by you.
- 8.3.2. you provide more than four (4) weeks written notice prior to the commencement of the first teaching/research period of the course of your inability to undertake the course, for reasons not covered under section 8.2. A refund of all tuition fees for the relevant teaching/research period and any tuition deposit fees for courses to be undertaken in future teaching/research periods as part of a packaged offer will be made, minus \$500 per course not to be undertaken by you.
- 8.3.3. you give less than four (4) weeks written notice prior to the commencement of the first teaching/research period of the course, of your inability to undertake the course. A refund of 50% of all tuition fees for the relevant teaching/research period and any tuition deposit fees paid for courses to be undertaken in future teaching/research periods as part of a packaged offer will be made, minus \$500 per course not to be undertaken by you.
- 8.3.4. you withdraw from or discontinue your course prior to the census date, as available at the links below:
 - [Monash University - https://www.monash.edu/students/admin/enrolments/dates/census](https://www.monash.edu/students/admin/enrolments/dates/census)
 - [Monash College Diplomas - http://www.monashcollege.edu.au/courses/diplomas/dates-and-fees](http://www.monashcollege.edu.au/courses/diplomas/dates-and-fees)
 - [Monash University Foundation Year - http://www.monashcollege.edu.au/courses/foundation-year/dates-and-fees](http://www.monashcollege.edu.au/courses/foundation-year/dates-and-fees)

A refund of 50% of all tuition fees for the relevant teaching/research period and any tuition deposit fees paid for courses to be undertaken in future teaching/research periods as part of a packaged offer will be made, minus \$500 per course not to be undertaken by you.



INTERNATIONAL STUDENT COURSE AGREEMENT

- 8.3.5. there is a refusal by the Australian Government authorities to grant you a visa and the refusal was a reason that directly or indirectly caused you to default under this Agreement. A refund of all tuition fees paid for the relevant teaching/research period and tuition deposit fees for courses to be undertaken in future teaching/research periods as part of a packaged offer will be made, less a fee. This fee shall be the lesser of (i) 5% of the total amount of pre-paid fees Monash University has received before the day of default in respect of the course/s now not being undertaken, and/or (ii) the amount of \$500.
- 8.3.6. at the discretion of the Associate Director, Student Finance, where other special or extenuating personal circumstances prevent you from studying the course and you supply documentary evidence of these circumstances that Monash University accepts as sufficient. Monash University will refund the part of tuition fees considered appropriate at the discretion of the Associate Director, Student Finance.

8.4. No refund of tuition fees (excluding Monash College English Language Courses)

There will be no refund of tuition fees paid if:

- 8.4.1. you withdraw course acceptance or enrolment from a course after the census date. Monash will, however, refund any tuition fees paid in advance for future teaching/research periods that will no longer be undertaken, minus an amount of \$500.
- 8.4.2. you have not formally withdrawn from your course and fail to enrol. Monash will, however, refund any tuition fees paid in advance for future teaching/research periods that will no longer be undertaken, minus an amount of \$500.
- 8.4.3. you are a Higher Degree by Research student who withdraws from a course more than four (4) weeks after the commencement of the course. Monash will, however, refund any tuition fees paid in advance for future teaching/research periods that will no longer be undertaken, minus an amount of \$500.
- 8.4.4. you have been excluded by Monash University for misconduct pursuant to Part 7 or Part 13 of the Monash University (Council) Regulations or by Monash College pursuant to the Student Code of Conduct / Misconduct Policy. Monash will, however, refund any tuition fees paid in advance for future teaching/research periods that will no longer be undertaken, minus an amount of \$500.
- 8.4.5. you have been excluded for unsatisfactory progress or inability to progress pursuant to Part 4 of Part 6 of the Monash University (Academic Board) Regulations, or by Monash College pursuant to the Academic Progress Policy. Monash will, however, refund any tuition fees paid in advance for future teaching/research periods that will no longer be undertaken, minus an amount of \$500.
- 8.4.6. you are otherwise in breach of this Agreement not explicitly covered in sections 8.2 and 8.3. Monash will, however, refund any tuition fees paid in advance for future teaching/research periods that will no longer be undertaken, minus an amount of \$500.
- 8.4.7. in lieu of a refund, and where Monash is unable to provide the original course, you elect to accept enrolment in an alternate course offered to you. Monash will, however, refund any tuition fees paid in advance for future teaching/research periods that will no longer be undertaken, minus an amount of \$500.
- 8.4.8. Monash is prohibited from doing so by relevant sanctions/laws.

8.5. Full refund of tuition fees (Monash College English Language Course only)

You will receive a full refund of all relevant tuition and tuition deposit fees, less the administration fee for an English Language Course if:

- 8.5.1. You give written notice of cancellation of enrolment at least four weeks prior to the commencement of the course.
- 8.5.2. where Monash College does not accept the application for enrolment.
- 8.5.3. if Monash College is unable to deliver the course and is unable to offer the student a place in a suitable alternative course.

8.6. Partial refund of tuition fees (Monash College English Language Course only)

You will receive a partial refund of all relevant tuition and tuition deposit fees for an English Language Course if:

- 8.6.1. you give less than four weeks notice, prior to the commencement of the teaching period of the course of your inability to undertake the course, in writing to Monash College. A full refund of tuition fees paid for future teaching periods, less the equivalent of five weeks tuition fees will be made. The administration fee is not refundable.



INTERNATIONAL STUDENT COURSE AGREEMENT

8.6.2. you are refused a visa and the refusal was for a reason that directly or indirectly causes you to default under this Agreement. In this case, Monash will refund tuition fees paid for the relevant teaching period and any tuition deposit fees for courses to be undertaken in future teaching periods as part of a packaged offer, less a fee. This fee shall be the lesser of (i) 5 per cent of the total amount of pre-paid fees Monash has received before the day of default in respect of the course(s) now not being undertaken, or (ii) the amount of \$500.

8.7. No refund of tuition fees (Monash College English Language Courses only)

No refund of tuition fees will be made if:

- 8.7.1. Monash receives your written notice of cancellation of enrolment in the course on or after the commencement of the course.
- 8.7.2. you have been excluded for misconduct by Monash College pursuant to the Student Misconduct Policy.
- 8.7.3. you have been excluded for unsatisfactory progress or inability to progress by Monash College pursuant to the Academic Progress Policy.
- 8.7.4. you do not formally withdraw from a course but fail to enroll.
- 8.7.5. you are otherwise in breach of this Agreement not otherwise covered by clauses 8.5 and 8.6.
- 8.7.6. Monash is prohibited from doing so by relevant sanctions/laws.

8.8. How refunds will be made

- 8.8.1. You should start the refund process by submitting a request at <https://www.monash.edu/students/admin/fees/refunds-remission-credit/apply-refund>.
- 8.8.2. Where payment was made by credit card, the refund will be processed to the same credit card if payment was made within the past seven months.
- 8.8.3. Where payment was made by a registered third party (sponsor), the refund will be issued to the registered third party.
- 8.8.4. In all other cases refund amounts will be issued to the student, or at the student's request, to a nominated third party, and will be processed in the following manner:
 - a) refunds to the student will be processed by telegraphic transfer (overseas) or Electronic Funds Transfer (within Australia).
 - b) refunds to a nominated third party may be paid by telegraphic transfer or EFT, when relevant bank account details and supporting documentation are provided.
 - c) refunds to a nominated third party may be processed by bank draft (overseas) or cheque (within Australia).
- 8.8.5. Refunds that are granted will be paid within four (4) weeks of receiving a refund application from you, except for circumstances set out in 8.2.3 in which case the refund will be paid to you within two (2) weeks of the day on which the course ceased being provided.
- 8.8.6. The refund amount calculated in Australian dollars (AUD) will normally be made in the currency of your country of permanent residence and payable in that country. Exceptions include non-tradable currencies (where the refund would normally then be paid in US dollars) or payment to another Australian educational institution. Monash is not liable for any variance due to foreign exchange rate fluctuations.
- 8.8.7. Any equipment issued to you for your use during your course must be returned in an appropriate condition, or the replacement value of the item will be deducted from any refund amount.
- 8.8.8. The refund amount will be calculated by the terms governing the type of refund (full or partial) and after all debts to Monash have been paid and after clearance of relevant cheques, receipt of all telegraphic transfers and/or direct deposits.

8.9. Transfers in lieu of a refund - Monash College Pty Ltd English Language Courses only

In lieu of a refund, you may elect, in some instances, to transfer any tuition fees paid for Monash College English Language Courses (the administration fee is not refundable) toward formal award courses at Monash University and Monash College Pty Ltd provided that:

- a) no transfers will be made to another English Language course provider, or any other institution other than Monash, or for or on behalf of any other student; and
- b) you request such a transfer, in writing, to Monash College Pty Ltd and can provide evidence of acceptance into a formal award course at either Monash University or Monash College Pty Ltd.



INTERNATIONAL STUDENT COURSE AGREEMENT

8.10. Complaints and appeals concerning refund application

In the event that you wish to contest Monash's handling or rejection of your request for a refund, you have access to established dispute resolution procedures set out in section 10. This process does not circumscribe your right to pursue other legal remedies.

9. Tuition Protection Service

9.1. In the event that the course in this Agreement cannot be or is not delivered by Monash, Monash is required to offer you placement in an alternative course or offer you a refund in accordance with this Agreement. Where Monash is unable to fulfil these obligations the Tuition Protection Service will assist you in these arrangements.

10. Complaints and Appeals

10.1. Complaints are dealt with in accordance with Monash's established dispute resolution processes. You can read about Monash's complaint handling process here:

Monash University:

- a) Student Complaints and Grievances Policy and Student Complaints and Grievances Procedures <https://publicpolicydms.monash.edu/Monash/documents/1935801> and <https://publicpolicydms.monash.edu/Monash/documents/1935789>

Monash College Pty Ltd:

- a) Academic and Non-Academic Complaint and Appeals Policy and Procedure <https://www.monashcollege.edu.au/about-us/policies-procedures/complaints-and-appeals>

10.2. Appeals are dealt with in accordance with Monash's established dispute resolution processes.

Monash University:

- a) If you are not satisfied with the resolution of your complaint at Monash University, in certain circumstances, you may refer your complaint to the Monash Ombudsman. You can read about the appeals process with the Monash Ombudsman here: <https://publicpolicydms.monash.edu/Monash/documents/1909258>.
- b) If you're not satisfied with the complaint resolution by the Monash Ombudsman or the Monash Ombudsman is unable to deal with your complaint, you may refer your complaint to the Victorian Ombudsman. You can find the Victorian Ombudsman's details here: <https://www.ombudsman.vic.gov.au/>.

Monash College Pty Ltd:

- a) If you are not satisfied with the resolution of your complaint at Monash College, you may refer your complaint to the Office of the Commonwealth Ombudsman. You can find details here: <https://www.ombudsman.gov.au/How-we-can-help/overseas-students>.

10.3. This Agreement and the right to make complaints and seek appeals of decisions and action under various processes, does not affect your rights to take action under the Australian Consumer Law if the Australian Consumer Law applies.

11. General Terms

11.1. Jurisdiction

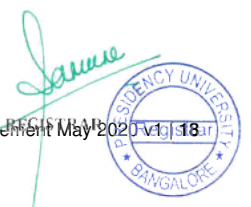
- a) You agree to irrevocably submit to the non-exclusive jurisdiction of the courts of Victoria, and the courts competent to determine appeals from those courts, with respect to any proceedings which may be brought at any time relating in any way to this Agreement.
- b) You agree to irrevocably waive any objection that you may now or in the future have to the venue of any proceedings, and any claim you may now or in the future have that any proceedings have been brought in an inconvenient forum, where that venue falls within clause 11.1(a).

11.2. Electronic signing



INTERNATIONAL STUDENT COURSE AGREEMENT

This Agreement may be executed by electronic signature when available (regardless of the form of electronic signature utilised) and this method of signature is conclusive of your intention to be bound by this Agreement, as if physical signing had occurred.





OLD DOMINION UNIVERSITY

April 13, 2022

Kushal Honnappa
NO.9, 6TH CROSS, 18TH MAIN, LAGGERE
BRIDGE
Bengaluru, Karnataka 560058
IN

University ID: 01220563
Student Type: Graduate
Intended Major: Computer Science (PHD)
Residency Status: International Student

Dear Kushal,

Congratulations! Old Dominion University and the Computer Science (PHD) Program are pleased to offer admission to you for the Fall 2022 semester. I am pleased you have selected Old Dominion University to further your education and delighted to welcome you to our family of more than 160,000 alumni, students, scholars and faculty with many distinguished accomplishments. The educational and research opportunities here are strong and diverse.

Please note your offer of admission requires you successfully complete all current course work (if applicable) and that you submit all official and original final transcripts or score reports reflecting any changes to your academic record to the Office of International Admissions.

After arrival on campus, your program director will assist you in the advising and enrollment process, including any specific program requirements. Scheduling an appointment with your advisor prior to course registration is required.

Sincerely,

Steven Risch
Director of International Admissions



September 13, 2022

Venkatanaganikhil Reddy Sanikommu
8-259/A1 Karanam Gari Bazar
Kothapeta Kanigiri
Kanigiri Prakasam Andhra Pradesh
India 523230

Your Student ID Number: 700746372

Dear Venkatanaganikhil Reddy,

Congratulations! We are pleased to admit you to the M.S. degree program in Computer Science at the University of Central Missouri for the spring 2023 semester. You have been granted regular admission which means you have satisfied the University of Central Missouri's minimum English proficiency requirement. This program will be located at the Missouri Innovation Campus: KAN214F00100001.

Classes begin on January 9, 2023. **A mandatory orientation will be held beginning on January 3, 2023 that you must attend in order to enroll.** You will receive additional emails about orientation, arrival expectations, and other useful information to help you as you plan for your arrival to UCM.

Reminder – Prior to the start of the semester, all final official transcripts (evaluations) that meet GPA requirements, from all college/post-secondary institutions attended must be submitted. Additional testing may be required upon arrival.

Please include your student ID number in all future contact with this office. If you have any questions after reading through the material, please contact us at isss@ucmo.edu or by phone at (660) 543-4092. We wish you well as you begin your journey to the University of Central Missouri.

Respectfully,



Rebecca Leevey
International Student Advisor
Designated School Official
University of Central Missouri



September 22, 2021

ID number: 1224093949
Valid only for 2022 spring
Residency status: International

Nithyusha Konanki
1-98-2, GIC Colony
Penukonda
Anantapur AP 515110
India

Dear Nithyusha Konanki,

Congratulations! I am pleased to inform you of your admission to Arizona State University to study in the Computer Science (MS) program at the Ira A. Fulton Schools of Engineering, offered at the ASU Tempe campus for the 2022 spring semester.

Important: For detailed information regarding I-20 requirements, including necessary forms and deadlines, go to the International Admission Services website at admission.asu.edu/international/student-visa. To monitor the progress of your I-20, view the I-20 Tracker in my.asu.edu.

For MMR immunization requirements, contact Student Health Services at students.asu.edu/health or 480-965-8177. Proof of MMR immunization is required before registration for classes is permitted.

To maximize the many resources available to you, please familiarize yourself with My ASU, your personalized online student information and services resource, at my.asu.edu. You can access this page by logging in with your new ASURITE User ID and password.

ASU and the Computer Science (MS) program are committed to assisting you in your exploration of the immense resources and opportunities available to you here. For additional information, you may contact your department at cidse.advising@asu.edu or at 480-965-3199.

ASU embraces integrity in all scholarships, research and creative endeavors. It is our expectation that you will review and abide by ASU's policies related to academic and research integrity at provost.asu.edu/academicintegrity and researchintegrity.asu.edu.

As a New American University, ASU believes your education should be transformative not only for you, but also for society. I encourage you to learn more about what this means to you by visiting newamericanuniversity.asu.edu. I also recommend you go to yourfuture.asu.edu/culture to watch a brief video and find out how current students describe the ASU community.

We look forward to you joining the ASU family, and I wish you success in your graduate studies here.

Sincerely,

A handwritten signature in black ink, appearing to read 'Elizabeth A. Wentz'.

Dr. Elizabeth A. Wentz
Vice Provost and Dean, Graduate College

Graduate College

P.O. Box 8701004 Tempe AZ 85287-1004
p: 480-965-7788 f: 480-965-5159 web: www.graduate.asu.edu

