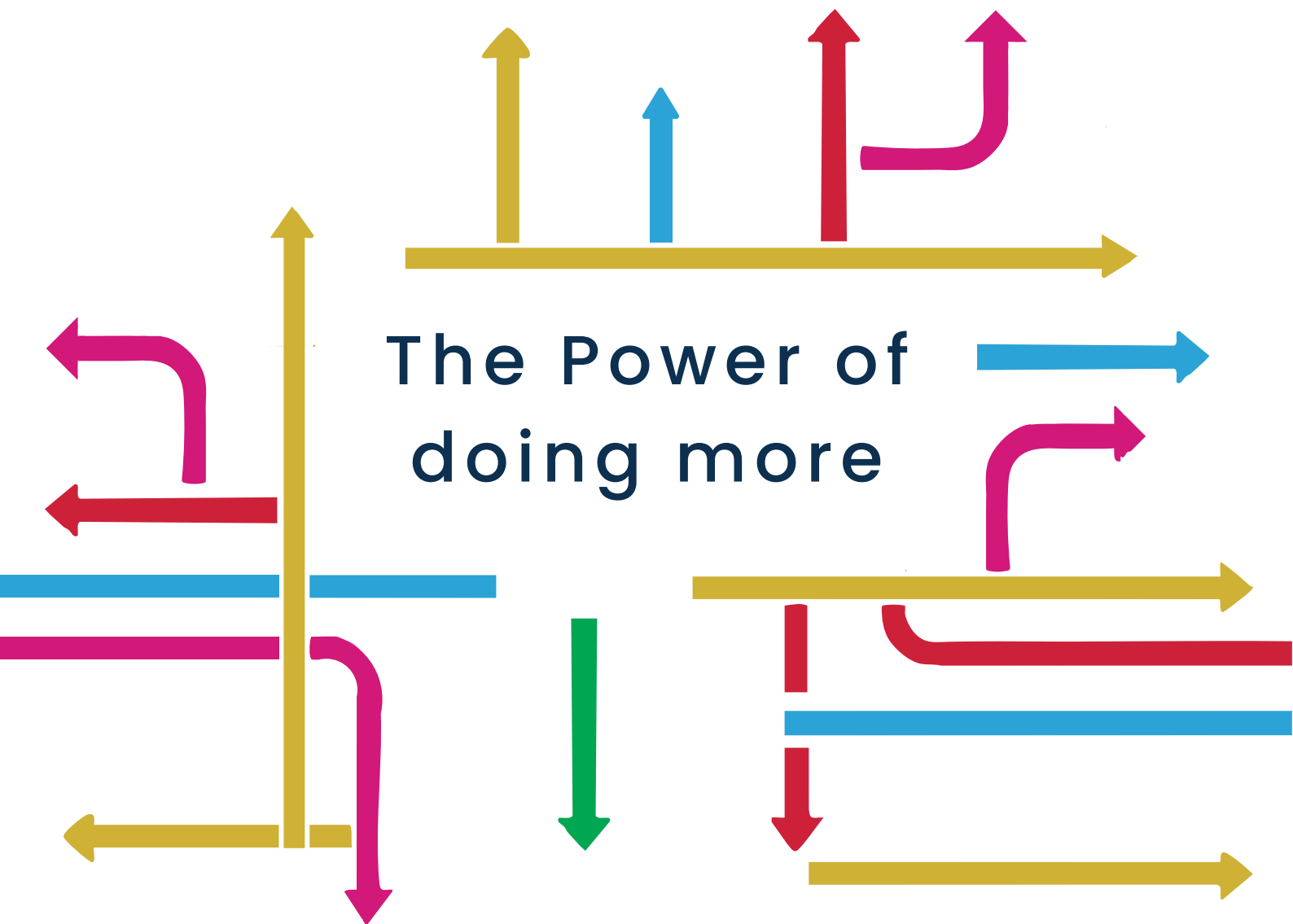




**PRESIDENCY**  
UNIVERSITY

# Presidency School of Liberal Arts & Sciences

Aspire. Believe. Become.



**Admissions Open 2025 – 2026**

## Introduction

Presidency School of Liberal Arts & Sciences offers dynamic undergraduate programmes designed to shape thoughtful, articulate, and socially aware individuals. With programmes in English and Psychology, students gain a strong foundation in critical analysis, communication, research, and understanding human behaviour. The BA English programme aims to nurture a deep appreciation for literature, language, and creative expression, while the BA Psychology programme equips students with scientific insights into the human mind and its functioning. Guided by distinguished faculty and an interdisciplinary approach, the school prepares students for diverse career paths and higher academic pursuits.

## Career Options

### BA English

- Technical Writing, Content Creation, Editing, and Publishing
- Teaching and Research
- Journalism and Mass Communication
- Translator, Interpreter and Language Analyst
- Scriptwriting, Documentary Production, and Film Critic
- Museum Curation and Heritage Management

### BA Psychology

- Education and Child Development
- Social Work and Community Outreach Workers
- Civil Services and Government Roles
- Research and Academia
- Entrepreneurship and Wellness Industries
- Higher Education





## Eligibility Criteria

### **BA English**

Candidates applying for BA English must have passed in 10+2/Pre University Course/Equivalent with 40% aggregate.

### **BA Psychology**

Candidates applying for BA Psychology must have passed in 10+2/Pre University Course/Equivalent with 40% aggregate.

## Why Presidency University?

- Interdisciplinary curriculum blending core expertise with broader learning.
- Experienced and dedicated faculty focused on student mentorship.
- Strong emphasis on research, critical thinking, and academic writing.
- Balanced global and Indian perspectives in literature and psychology.
- Additional language options to enhance global communication skills.
- Career readiness through internships, workshops, and industry exposure.
- Vibrant campus life with active clubs, literary festivals, and forums.

# Programmes Offered

## BA English

The BA English programme is designed to foster intellectual curiosity, cultural literacy, and critical thinking through the study of literature. This programme enables students to engage with a wide range of texts – from classical epics to contemporary narratives – while cultivating analytical, interpretive, and expressive skills essential for academic, creative, and professional pursuits. By integrating literary studies with psychology, digital humanities, and value-based education, the programme not only deepens students' understanding of human experience but also equips them with the tools to contribute meaningfully to society in diverse roles such as educators, writers, media professionals, and scholars.

## BA Psychology

The BA Psychology programme offers specific core courses in core areas of psychology, such as developmental psychology, abnormal psychology, behavioural psychology, cognitive psychology, social psychology, and other courses. Students gain a strong foundation in scientific thinking and psychological theory while also developing key competencies in observation, analysis, communication, empathy, and ethical reasoning. The programme emphasises both qualitative and quantitative research skills and encourages students to explore the intersection of psychology with other disciplines like sociology, neuroscience, education, gender studies, and philosophy.

Classroom learning is complemented by experiential opportunities such as workshops, internships, community outreach, and research projects, ensuring that students graduate with a well-rounded, socially relevant, and application-orientated education.










# Make Memories for Life at Presidency University



-  Presidency School of Computer Science & Engineering
-  Presidency School of Information Science
-  Presidency School of Engineering
-  Presidency School of Management
-  Presidency School of Commerce

-  Presidency School of Law
-  Presidency School of Design
-  Presidency School of Media Studies
-  Presidency School of Liberal Arts & Sciences
-  Presidency School of Allied Health Sciences



Scan To Visit  
Our Website

 [PresidencyUniversityBangalore](https://www.facebook.com/PresidencyUniversityBangalore)

 [presidencyuniversity](https://twitter.com/presidencyuniversity)

 [presidencyuniversity](https://www.instagram.com/presidencyuniversity)

 Phone: +91-90220-92222

 [admission@presidencyuniversity.in](mailto:admission@presidencyuniversity.in)

Campus : Rajanukunte, Yelahanka, Bengaluru, Karnataka, Pin: 560119